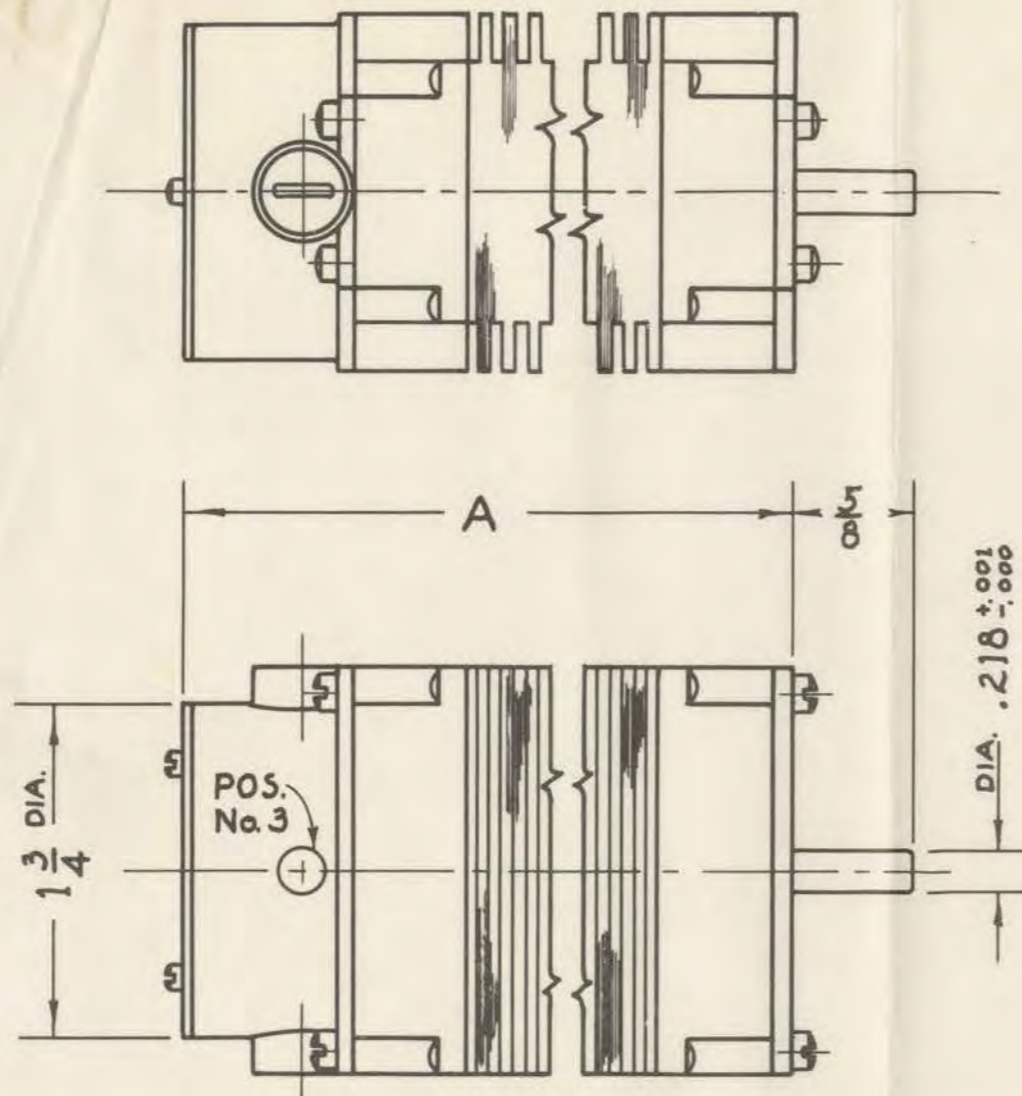
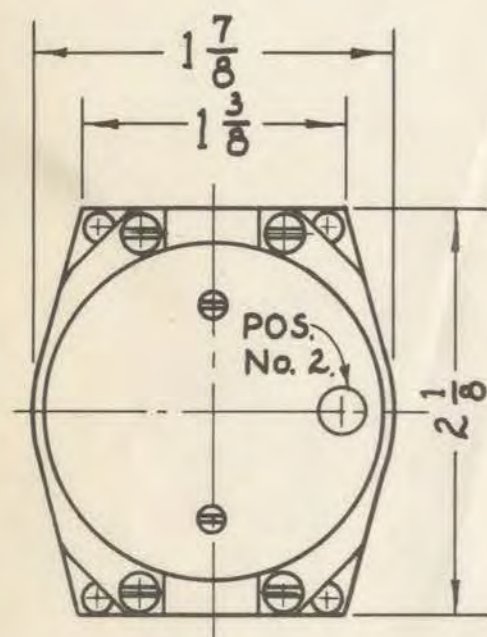


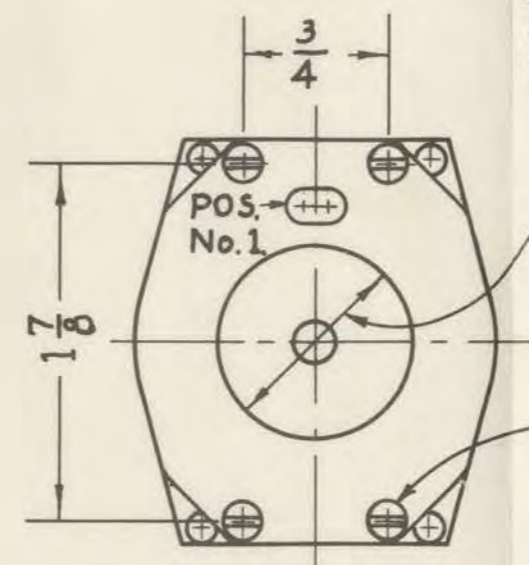
# FULL SCALE



MOTOR FRAME	CO-04	CO-05	CO-06	CO-07	CO-10	CO-11	CO-12	CO-14
LENGTH "A"	2 11/16	2 13/16	2 15/16	3 1/16	3 3/16	3 5/16	3 7/16	3 11/16
WEIGHT lbs. (App.)	1.08	1.14	1.20	1.26	1.31	1.37	1.43	1.55

LEAD CONNECTIONS: CAN BE SUPPLIED AT POSITIONS No. 1, 2 OR 3. LEADS WILL BE AT POS. No. 1 UNLESS OTHERWISE SPECIFIED. STANDARD PLUG CONNECTIONS CAN BE SUPPLIED AT POSITION Nos. 2 AND 3 AT ADDITIONAL COST.

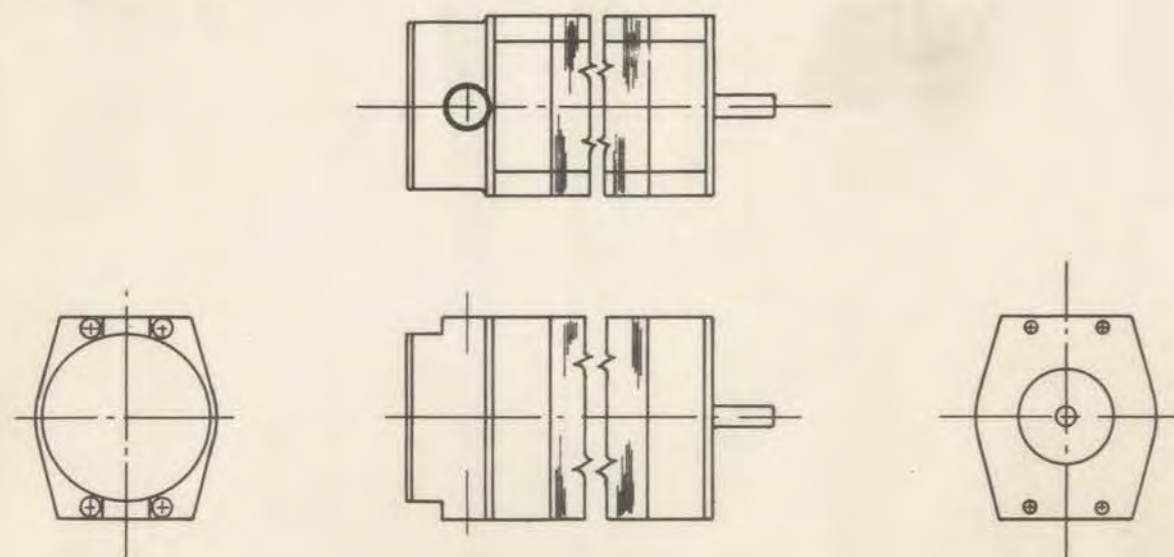
CENTER FIT: MACHINED ONLY IF REQUESTED. DIAMETER CAN BE SPECIFIED.



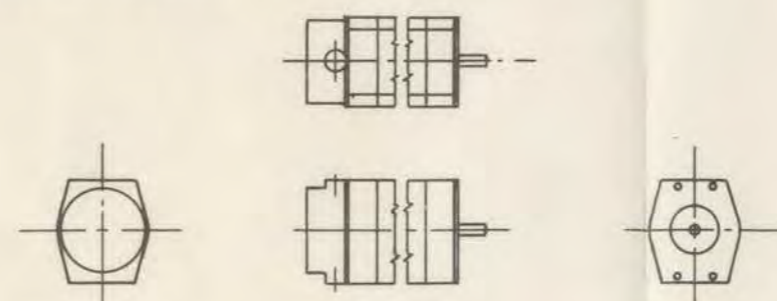
CENTER FIT  
1.000  $\pm$ .001 DIA.  
-.000

4 #6-32 MACHINE SCREWS MAY BE REPLACED BY BOLTS OR STUDS FOR MOUNTING.

## HALF SCALE



## QUARTER SCALE

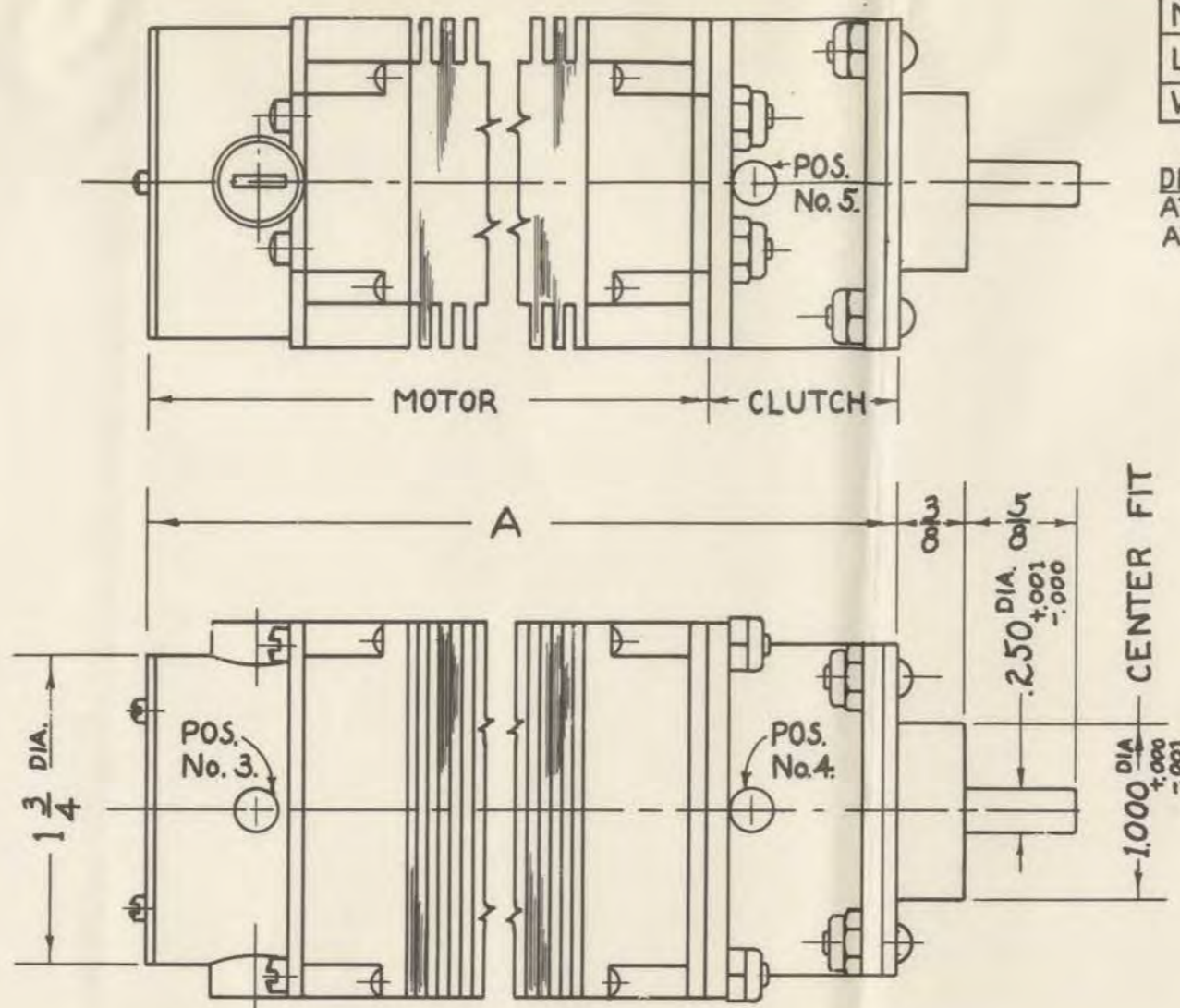
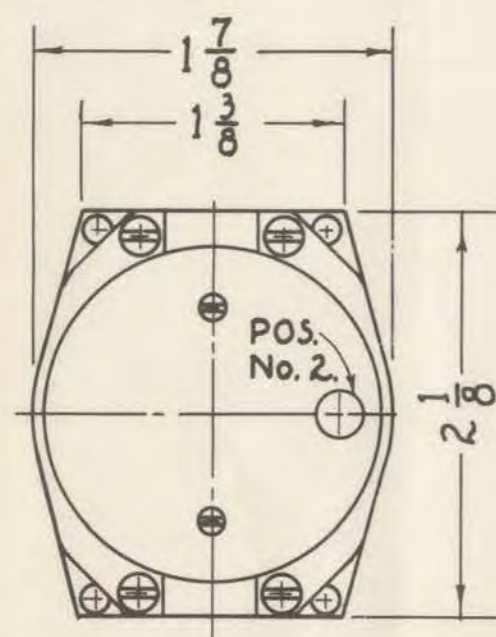


THIS PRINT SUPERSEDES ALL PRINTS PRIOR TO

MATERIAL FINISH SCALE AS NOTED	DIM. INCHES	TITLE LEAR MOTOR FRAME "C" WITHOUT CLUTCH	DRAWN BY W.K. Schon	DRAWING NO.	ISSUE
TOLERANCES ARE: DECIMALS $\pm$ .003 FRACTIONS $\pm$ 1/64 UNLESS OTHERWISE SPECIFIED		DATE 3-5-41	APPROVED BY F.K.	CM-B-C292	0
ORIGINAL JOB NUMBER		LEAR AVIA OF CALIFORNIA, INC. HOLLYWOOD, CALIFORNIA			

End of this  
document

FULL SCALE

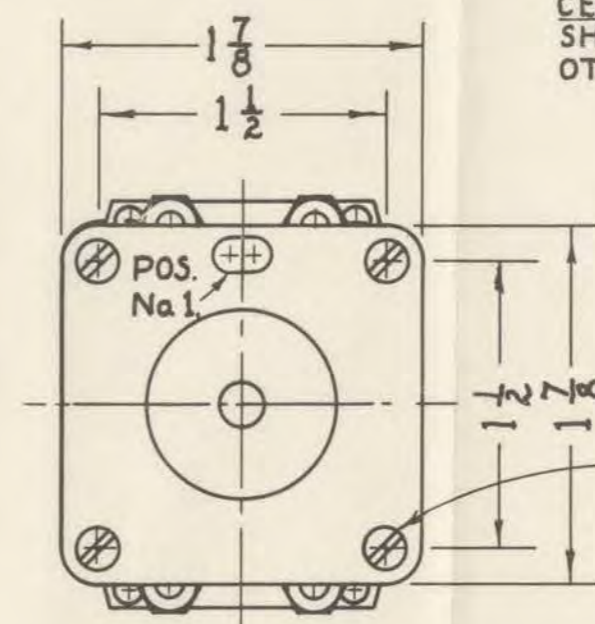


MOTOR FRAME	CC-04	CC-05	CC-06	CC-07	CC-10	CC-11	CC-12	CC-14
LENGTH A	3 25/32	3 29/32	4 1/32	4 5/32	4 9/32	4 13/32	4 17/32	4 25/32
WEIGHT lbs. (App)	1.51	1.57	1.63	1.69	1.75	1.80	1.86	1.98

DRIVE: PINION GEAR  
AVAILABLE ON DRIVE SHAFT  
AT ADDITIONAL COST.

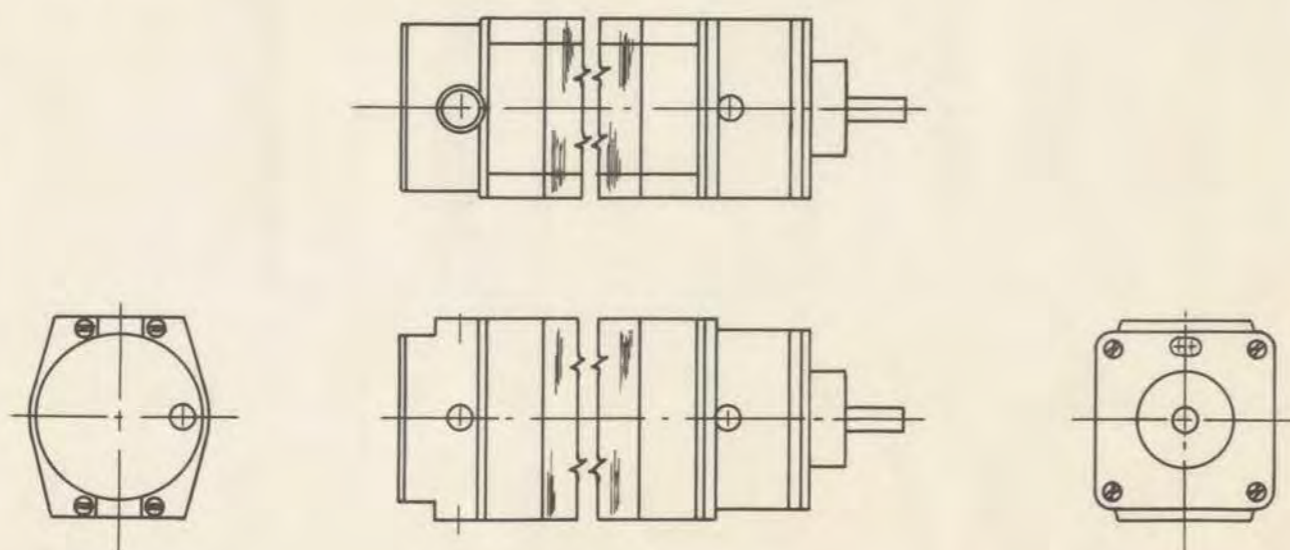
LEAD CONNECTIONS: CAN BE  
SUPPLIED AT POS. No. 1, 2, 3, 4  
OR 5. LEADS WILL BE AT  
POS. No. 1 UNLESS OTHERWISE  
SPECIFIED. STANDARD PLUG  
CONNECTIONS CAN BE SUPPLIED  
AT POSITION Nos. 2, 3, 4 AND  
5 AT ADDITIONAL COST.

CENTER FIT: MACHINED AS  
SHOWN UNLESS SPECIFIED  
OTHERWISE.

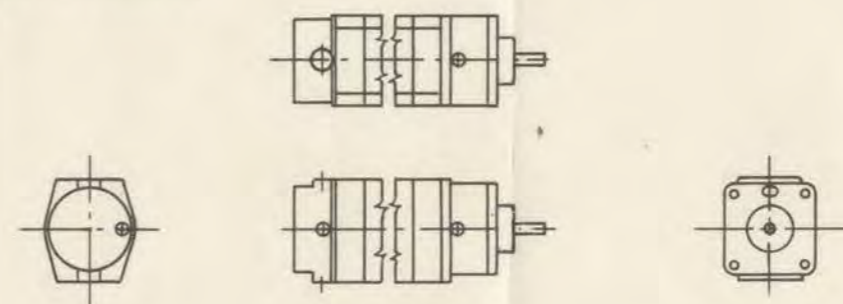


4 #6 ROUND HEAD SCREWS  
MAY BE REPLACED BY  
BOLTS OR STUDS FOR  
MOUNTING.

HALF SCALE



QUARTER SCALE

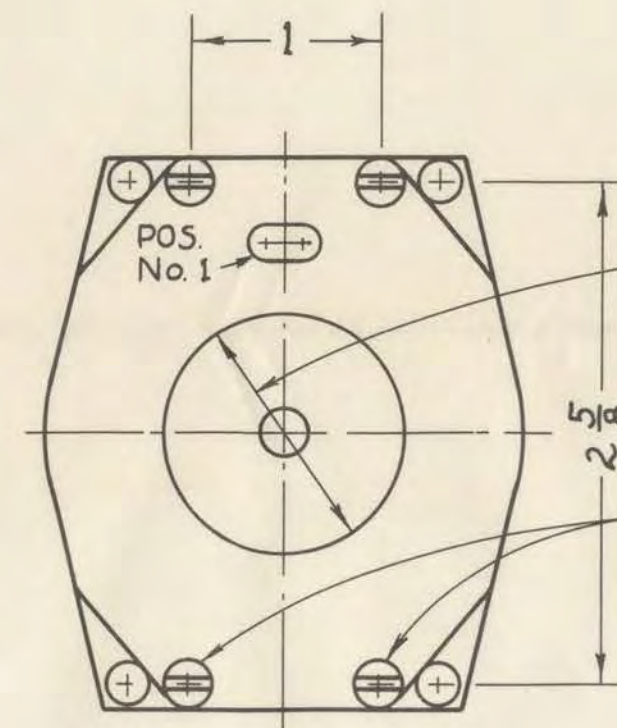
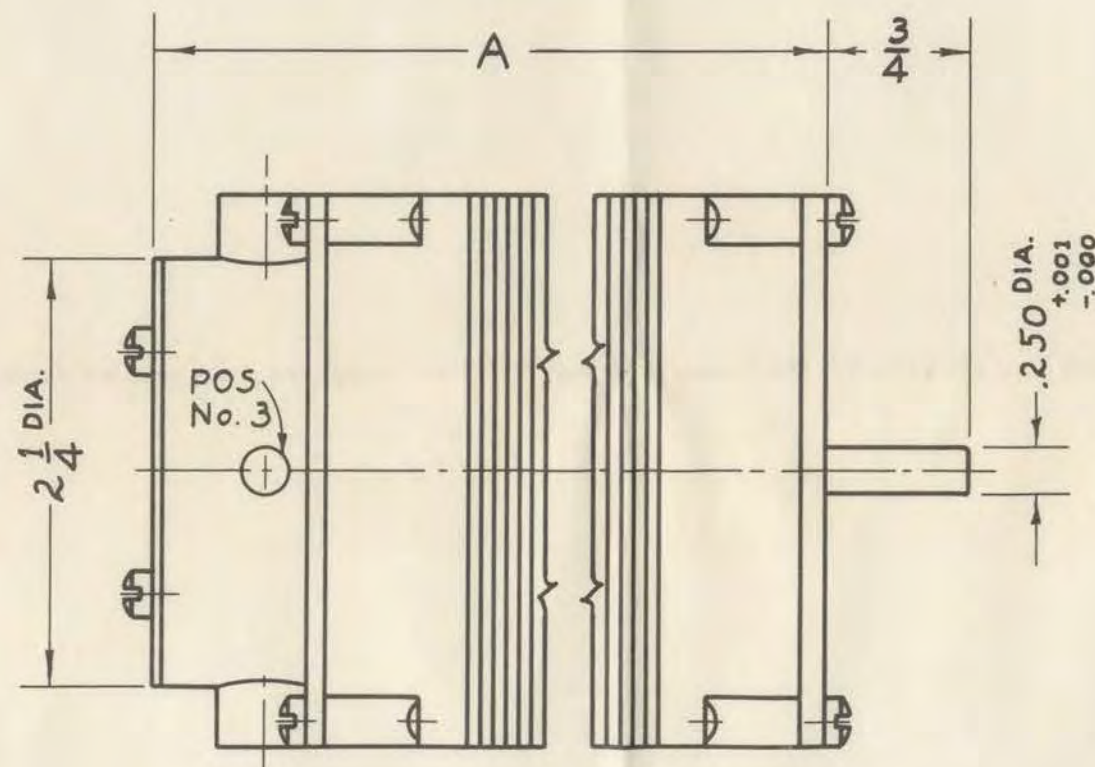
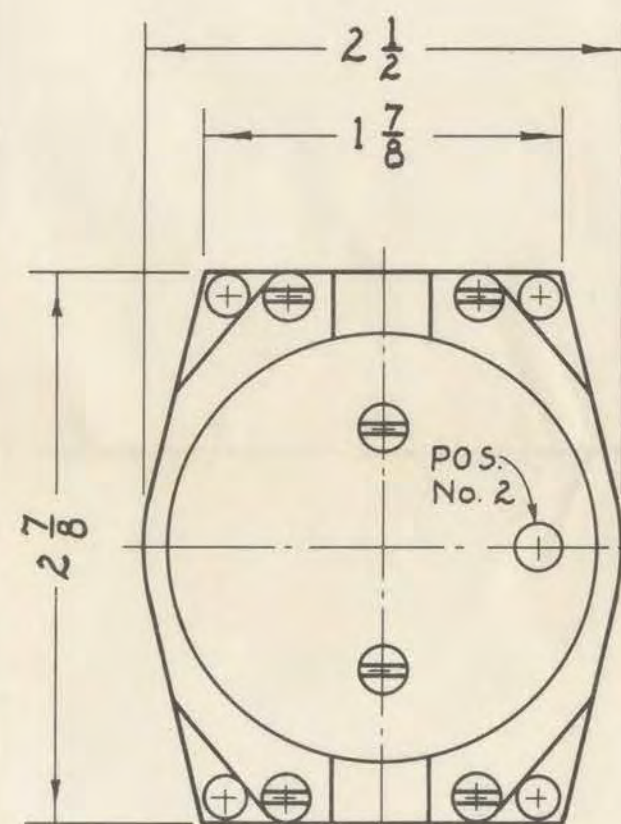


THIS PRINT SUPERSEDES ALL PRINTS PRIOR TO

MATERIAL FINISH SCALE AS NOTED DIM. INCHES	TITLE <b>LEAR MOTOR, FRAME "C" WITH LEAR FASTOP CLUTCH</b>	DRAWING NO.	ISSUE
TOLERANCES ARE: DECIMALS $\pm .003$ FRACTIONS $\pm 1/64$ UNLESS OTHERWISE SPECIFIED	DRAWN BY W.K. Schon DATE 3-7-41 APPROVED BY E.K.	<b>CM-B-C293</b>	<b>1</b>
ORIGINAL JOB NUMBER	<b>LEAR AVIA OF CALIFORNIA, INC.</b> HOLLYWOOD, CALIFORNIA		

End of this  
document

FULL SCALE



CENTER FIT  
1.250 DIA.  
+.001  
-.000  
SEE NOTE

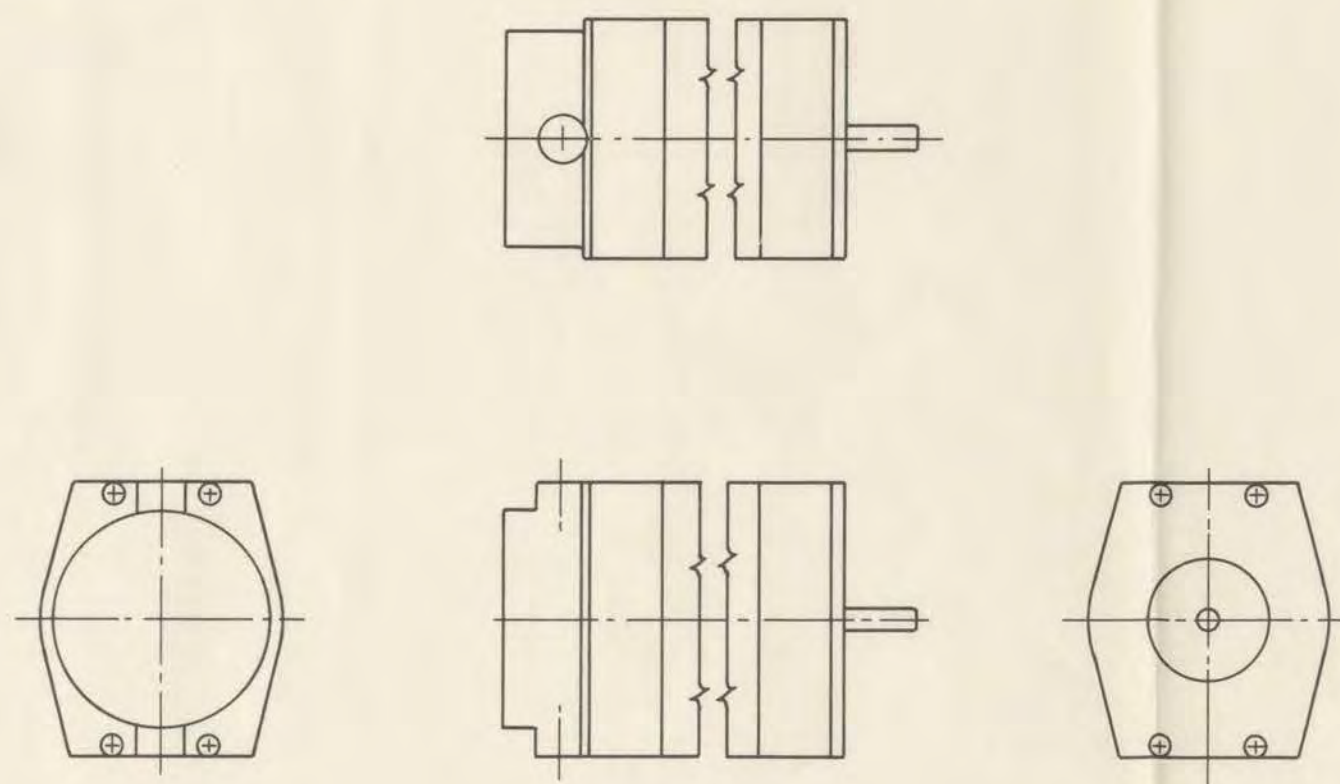
4 \* 8-32 MACHINE SCREWS MAY  
BE REPLACED BY BOLTS OR  
STUDS FOR MOUNTING.

MOTOR FRAME	D0-04	D0-05	D0-06	D0-07	D0-10
LENGTH "A"	3 1/32	3 5/32	3 9/32	3 13/32	3 17/32
WEIGHT lbs. (App)	1.98	2.14	2.30	2.46	2.62

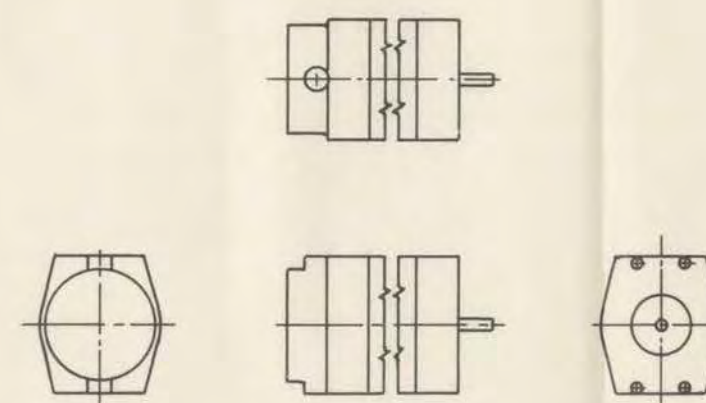
LEAD CONNECTIONS: CAN BE SUPPLIED  
AT POSITIONS No. 1, 2 OR 3. LEADS WILL  
BE AT POSITION No. 1 UNLESS OTHERWISE  
SPECIFIED. STANDARD PLUG CONNECTIONS  
CAN BE SUPPLIED AT POSITIONS No. 2  
AND 3 AT ADDITIONAL COST.

CENTER FIT: MACHINED ONLY IF REQUESTED.  
DIAMETER CAN BE SPECIFIED.

HALF SCALE



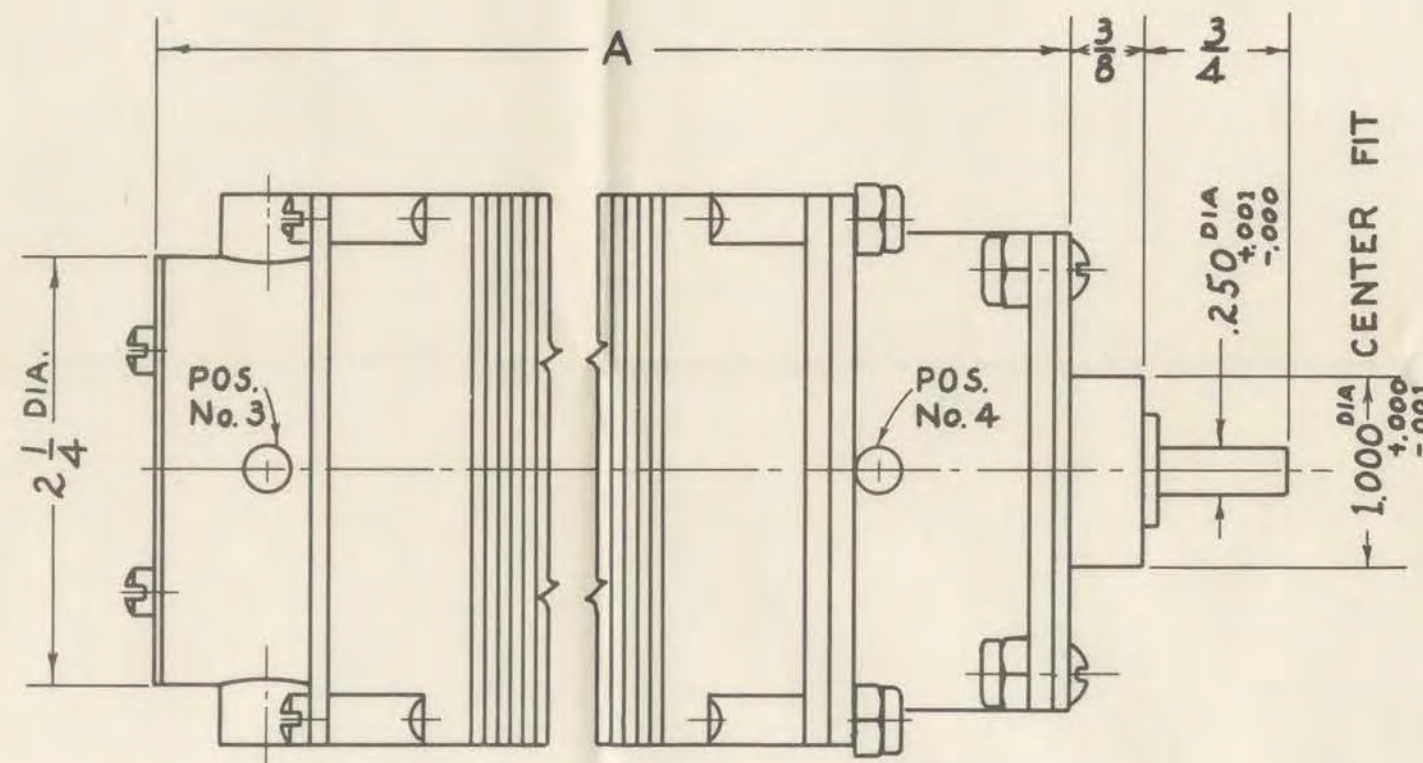
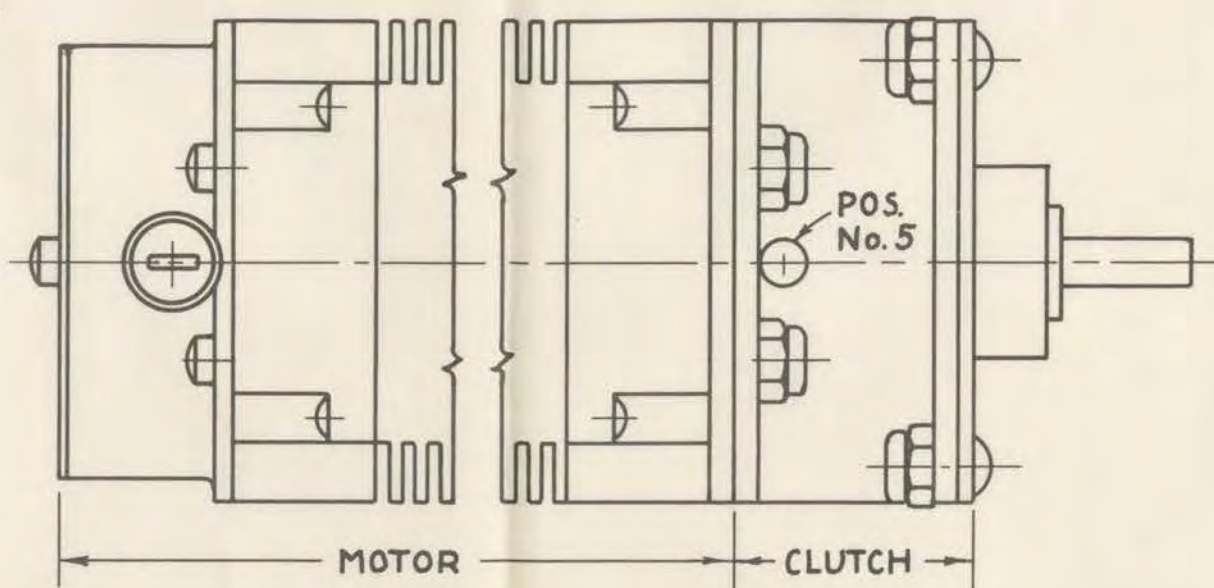
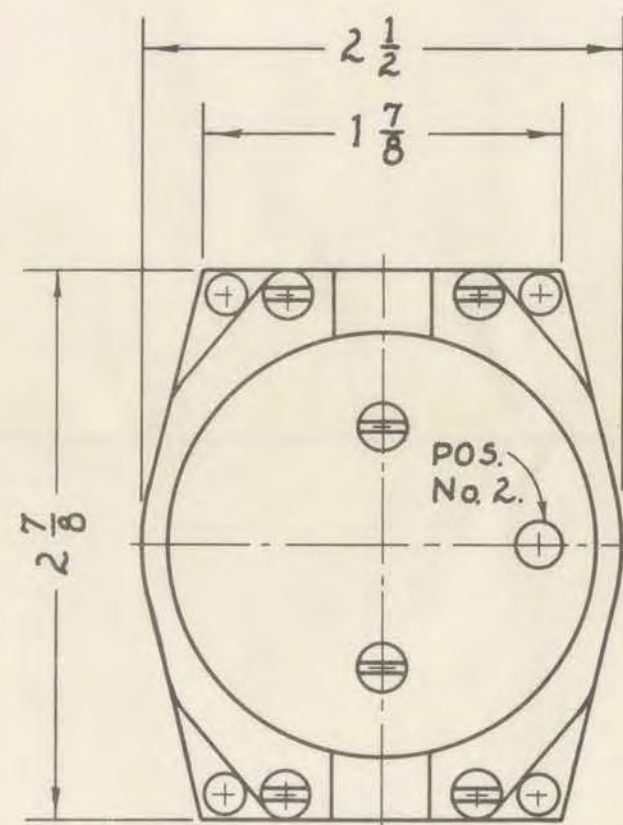
QUARTER SCALE



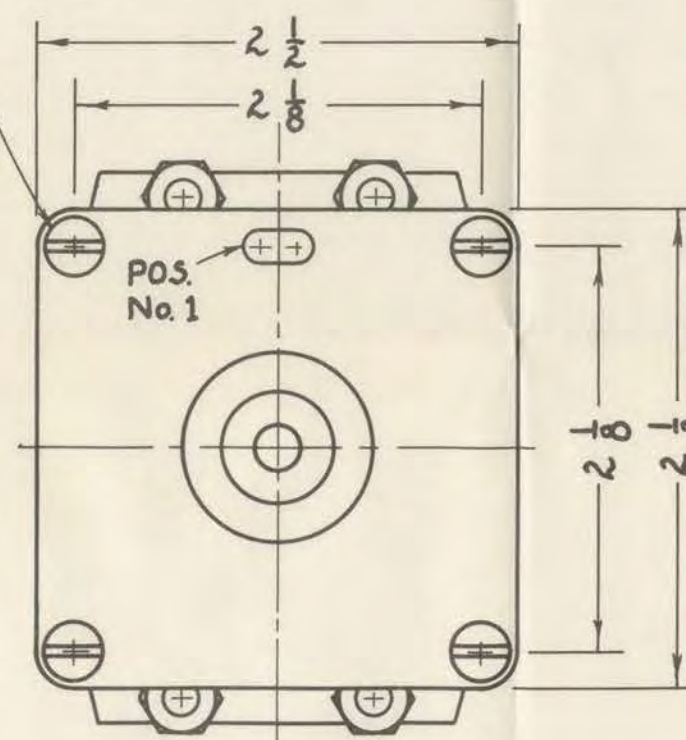
THIS PRINT SUPERSEDES ALL PRINTS PRIOR TO		TITLE	
MATERIAL		LEARN MOTOR	
FINISH		FRAME "D" WITHOUT CLUTCH	
SCALE AS NOTED DIM. INCHES		DRAWN BY W. K. Schen	
TOLERANCES ARE:		DATE 3-17-41	
DECIMALS ± .003		APPROVED BY E.K.	
FRACTIONS 3/64		CM-C-D292	
UNLESS OTHERWISE SPECIFIED		ORIGINAL JOB NUMBER	
		LEAR AVIA OF CALIFORNIA, INC.	
		HOLLYWOOD, CALIFORNIA	

End of this  
document

FULL SCALE



4 #8 ROUND HEAD SCREWS  
MAY BE REPLACED BY  
BOLTS OR STUDS FOR  
MOUNTING.



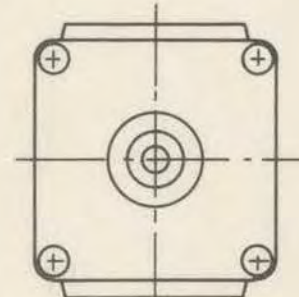
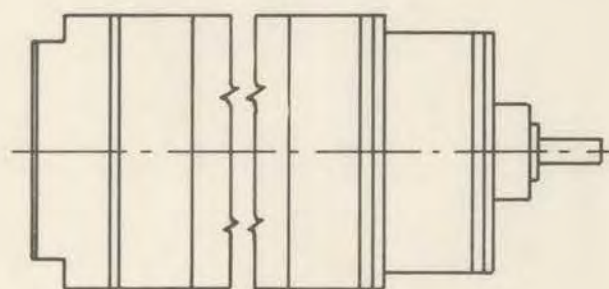
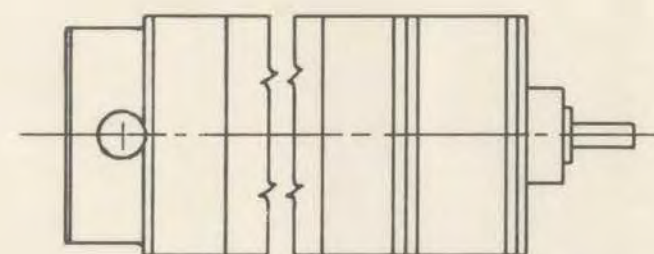
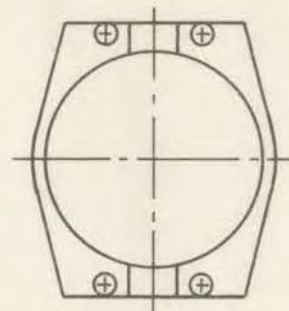
MOTOR FRAME	DD-04	DD-05	DD-06	DD-07	DD-10
LENGTH "A"	4 17/32	4 21/32	4 25/32	4 29/32	5 1/32
WEIGHT lbs. (App)	2.58	2.74	2.90	3.06	3.21

LEAD CONNECTIONS: CAN BE SUPPLIED  
AT POSITIONS No. 1, 2, 3, 4 OR 5. LEADS WILL  
BE AT POSITION No. 1 UNLESS OTHERWISE  
SPECIFIED. STANDARD PLUG CONNECTIONS  
CAN BE SUPPLIED AT POSITIONS No. 2,  
3, 4 & 5 AT ADDITIONAL COST.

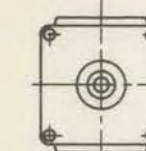
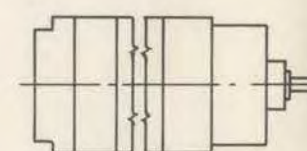
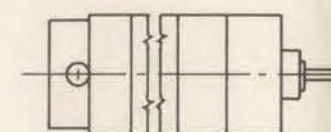
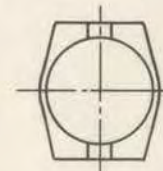
CENTER FIT: MACHINED AS SHOWN UNLESS  
SPECIFIED OTHERWISE.

DRIVE: PINION GEAR AVAILABLE ON DRIVE  
SHAFT AT ADDITIONAL COST.

HALF SCALE



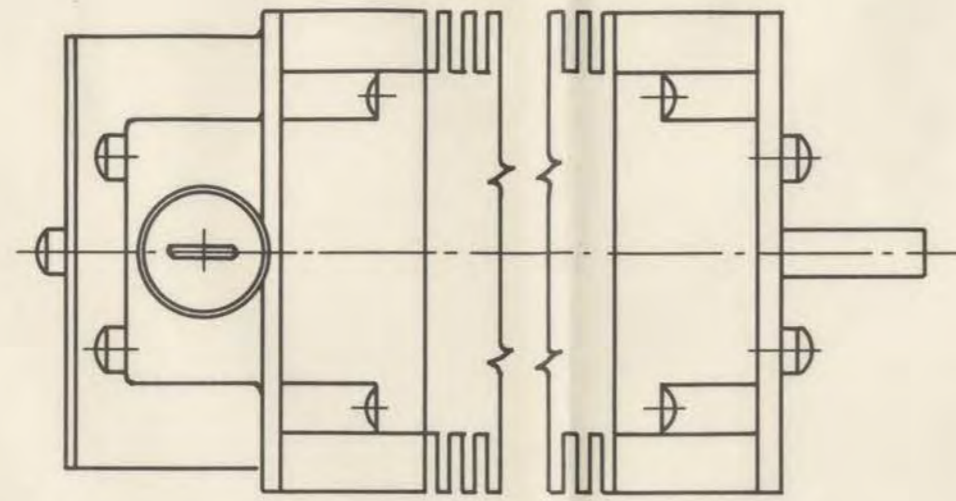
QUARTER SCALE



THIS PRINT SUPERSEDES ALL PRINTS PRIOR TO	
MATERIAL SCALE AS NOTED DIM INCHES TOLERANCES ARE: DECIMALS .005 FRACTIONS 1/16 UNLESS OTHERWISE SPECIFIED ORIGINAL JOB NUMBER	TITLE <b>LEAR MOTOR FRAME "D" WITH CLUTCH</b> DRAWN BY W. K. Schon DATE 3-25-41 APPROVED BY F.K. LEAR AVIA OF CALIFORNIA, INC. HOLLYWOOD, CALIFORNIA
DRAWING NO. CM-C-D 293 ISSUE 0	

End of this  
document

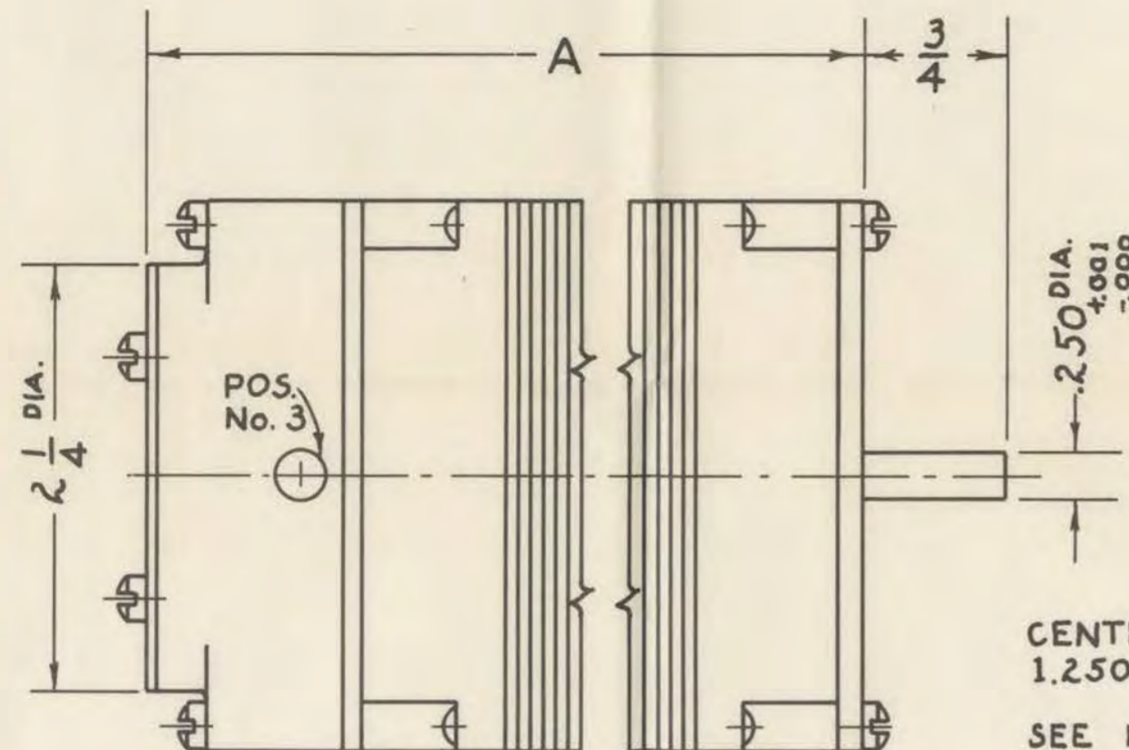
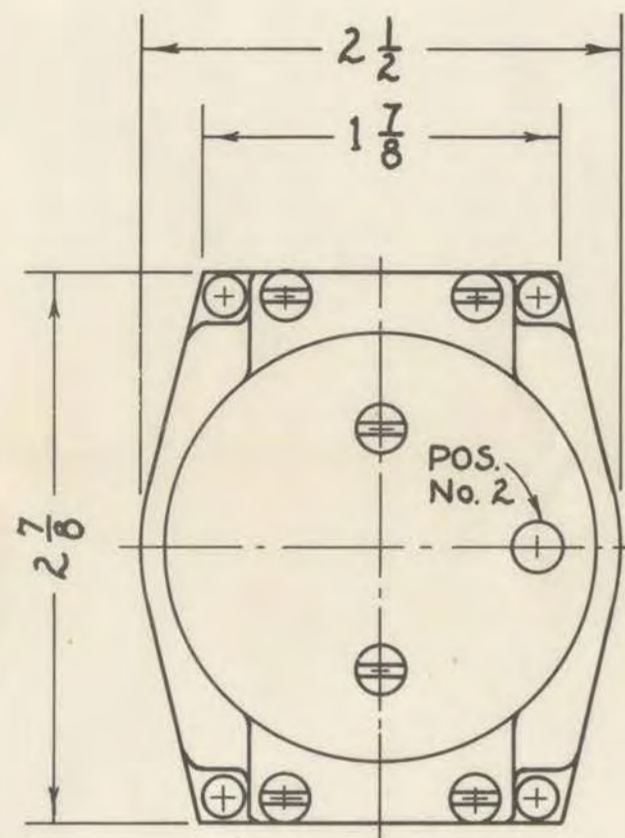
FULL SCALE



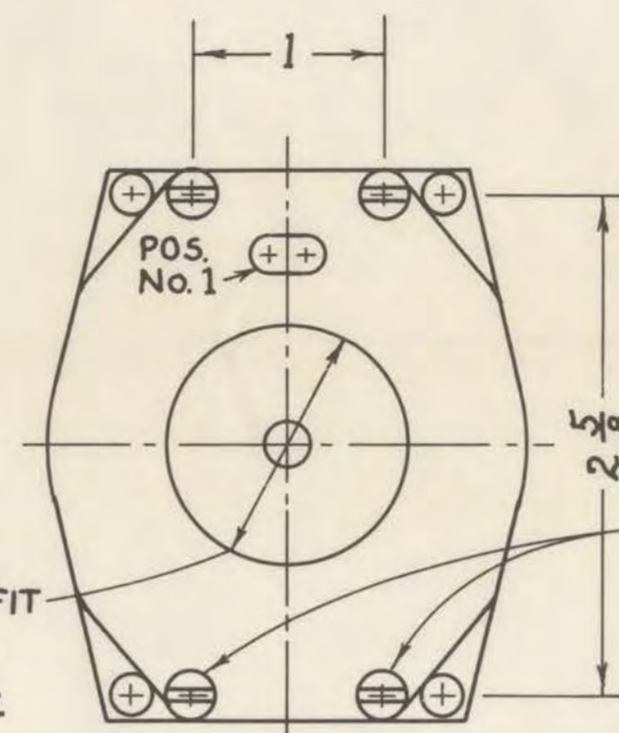
MOTOR FRAME	DO-12	DO-14	DO-16	DO-20
LENGTH "A"	4	4 1/4	4 1/2	4 3/4
WEIGHT lbs. (App)	3.23	3.55	3.87	4.20

LEAD CONNECTIONS: CAN BE SUPPLIED AT POSITIONS No. 1, 2 OR 3. LEADS WILL BE AT POSITION No. 1 UNLESS OTHERWISE SPECIFIED. STANDARD PLUG CONNECTIONS CAN BE SUPPLIED AT POSITIONS No. 2 AND 3 AT ADDITIONAL COST.

CENTER FIT: MACHINED ONLY IF REQUESTED. DIAMETER CAN BE SPECIFIED.

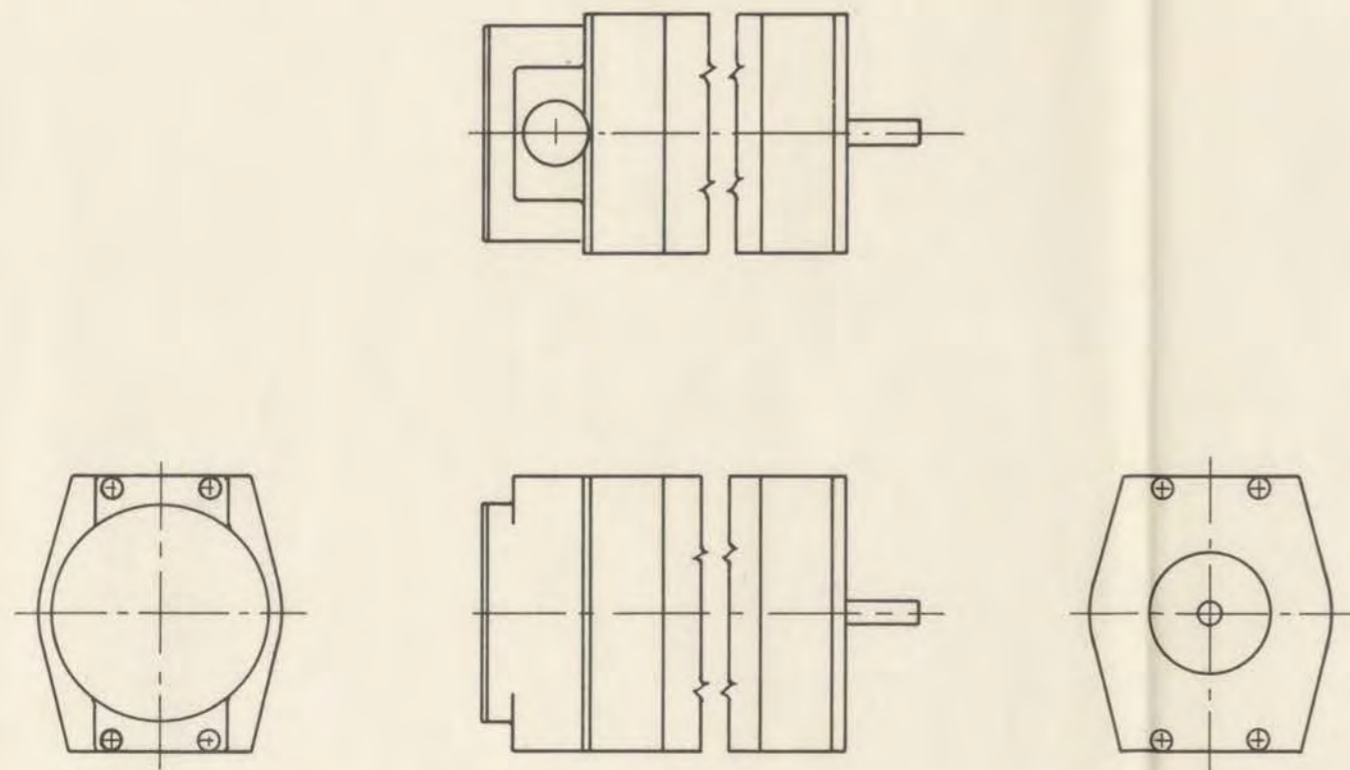


CENTER FIT  
1.250 DIA.  
+.001  
-.000  
SEE NOTE

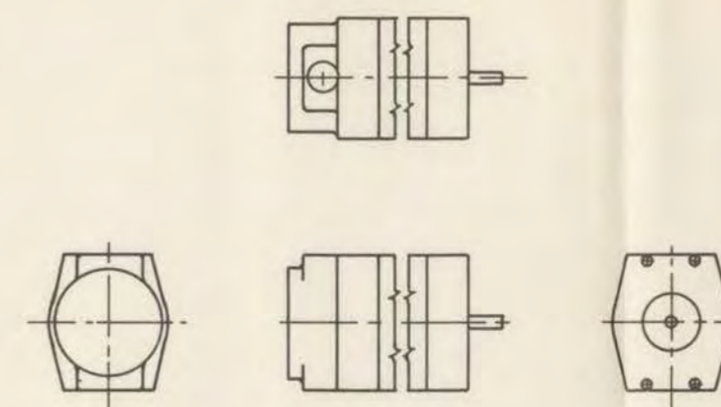


4 #8-32 MACHINE SCREWS MAY BE REPLACED BY BOLTS OR STUDS FOR MOUNTING.

HALF SCALE



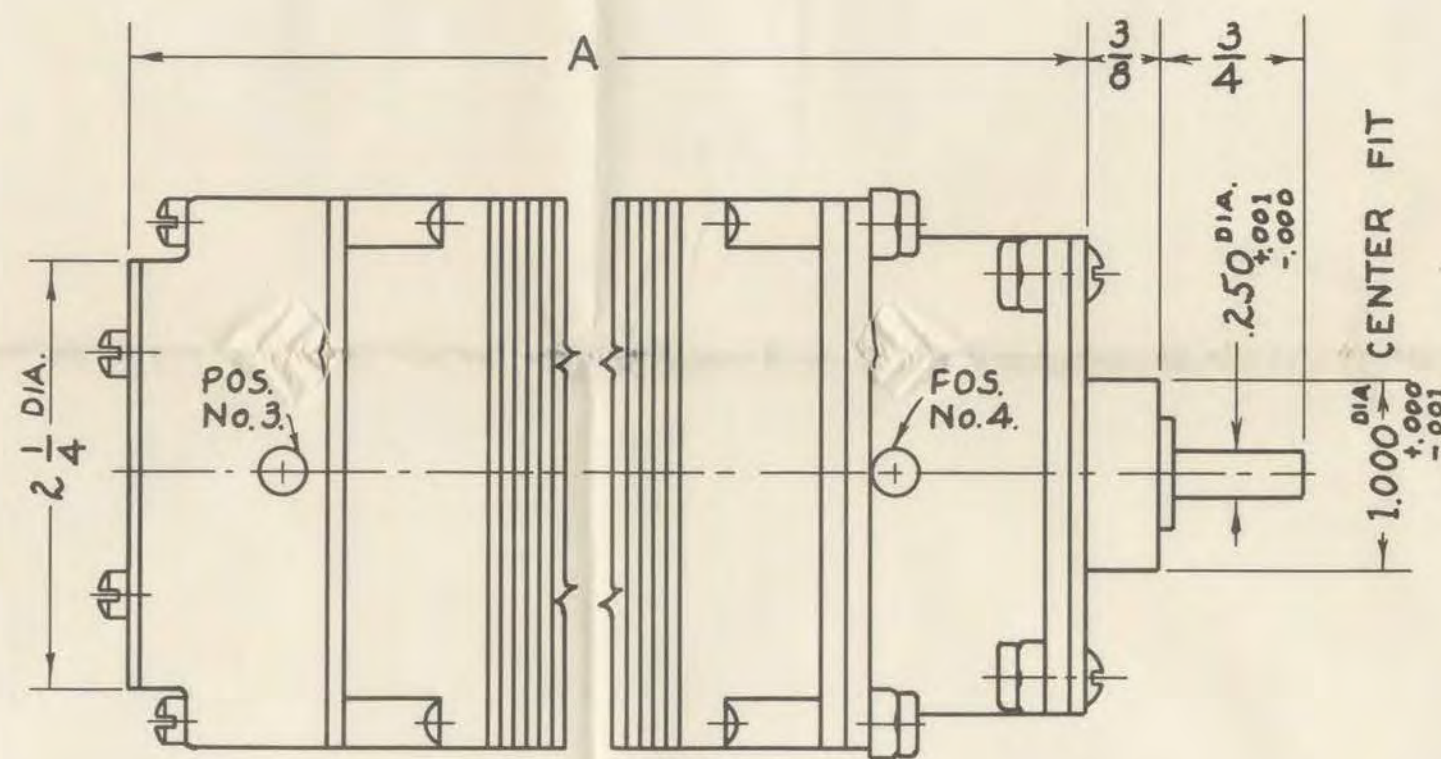
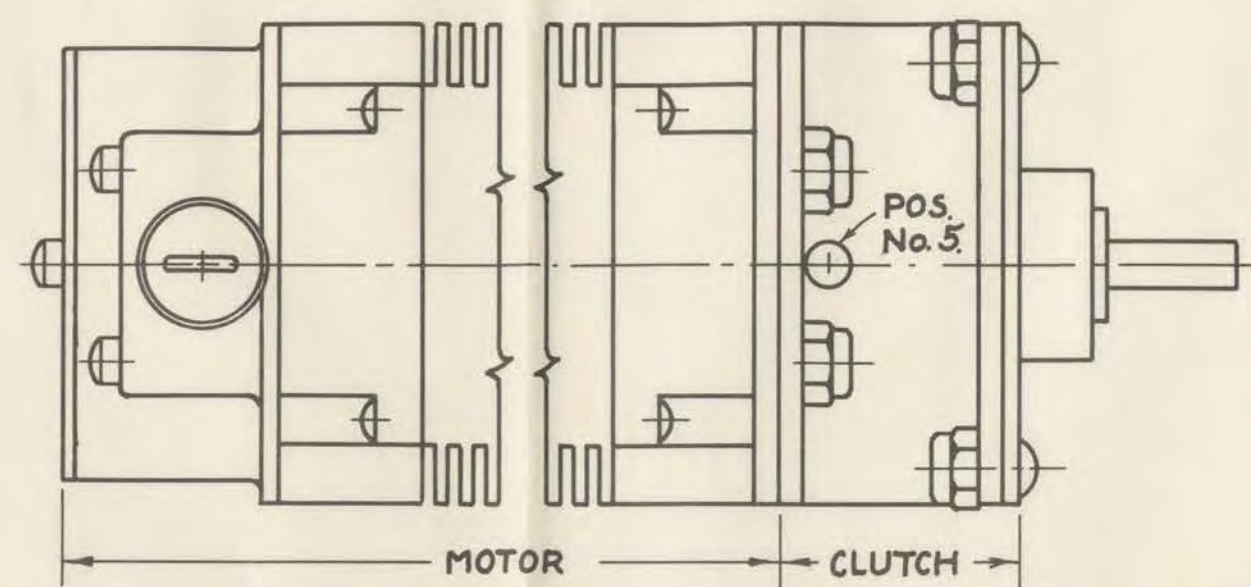
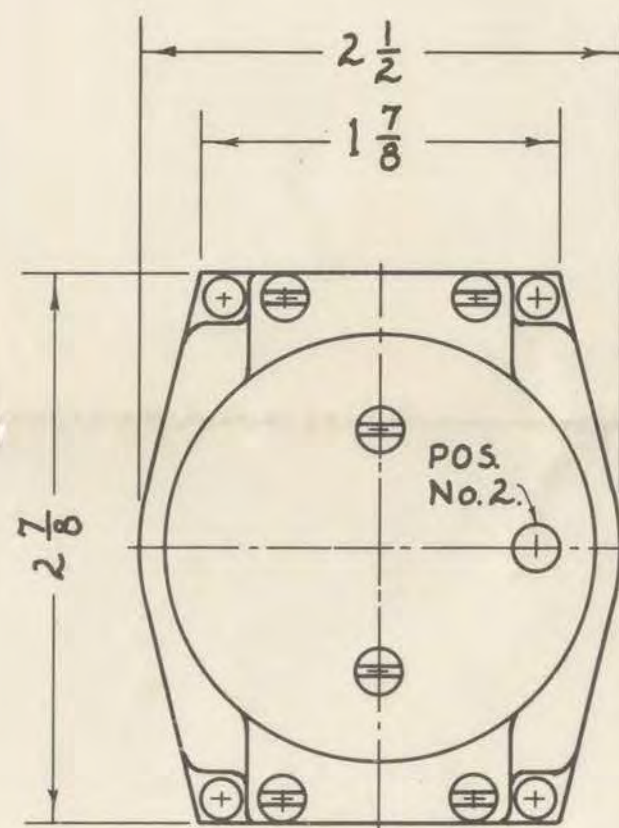
QUARTER SCALE



THIS PRINT SUPERSEDES ALL PRINTS PRIOR TO _____	
MATERIAL FINISH SCALE AS NOTED	TITLE LEAR MOTOR FRAME "D" LONG COMMUTATOR WITHOUT CLUTCH DRAWN BY W.M.K. Schor DATE 3-29-41 APPROVED BY F.K. ORIGINAL JOB NUMBER
DRAWING NO. 1 ISSUE <b>CM-C-D297 0</b> LEAR AVIA OF CALIFORNIA INC HOLLYWOOD, CALIFORNIA	

End of this  
document

FULL SCALE



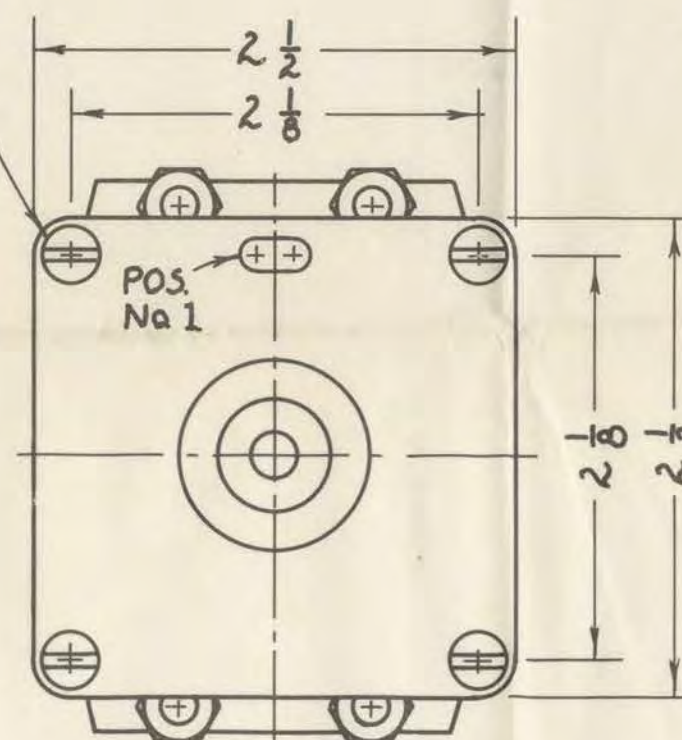
MOTOR FRAME	DD-12	DD-14	DD-16	DD-20
LENGTH "A"	5 1/2	5 3/4	6	6 1/4
WEIGHT lbs. (App)	4.03	4.33	4.67	5.00

LEAD CONNECTIONS: CAN BE SUPPLIED AT POSITIONS No. 1, 2, 3, 4 OR 5. LEADS WILL BE AT POSITION No. 1 UNLESS OTHERWISE SPECIFIED. STANDARD PLUG CONNECTIONS CAN BE SUPPLIED AT POSITIONS No. 2, 3, 4 & 5 AT ADDITIONAL COST.

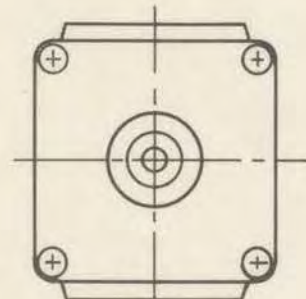
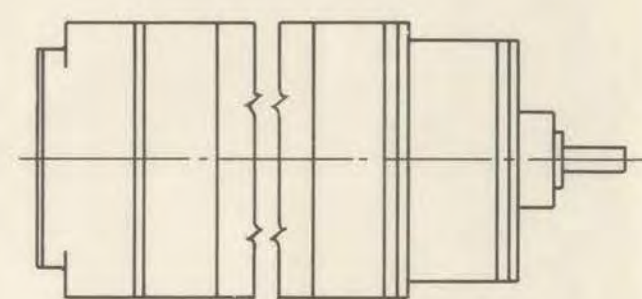
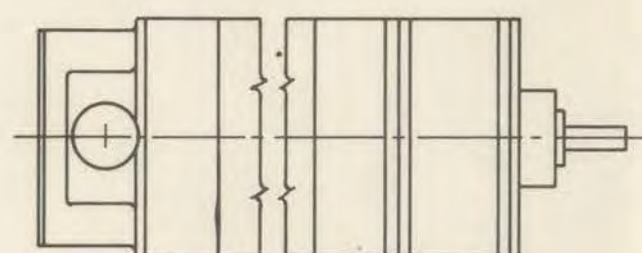
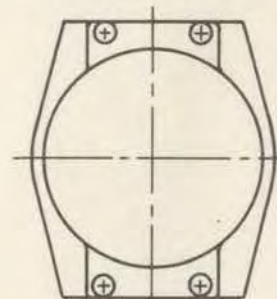
CENTER FIT: MACHINED AS SHOWN UNLESS SPECIFIED OTHERWISE.

DRIVE: PINION GEAR AVAILABLE ON DRIVE SHAFT AT ADDITIONAL COST.

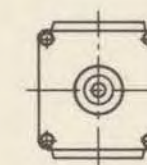
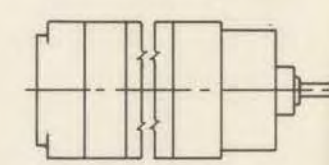
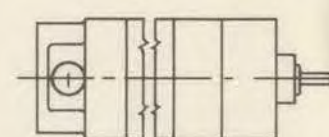
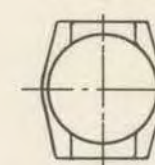
4 #8 ROUND HEAD SCREWS MAY BE REPLACED BY BOLTS OR STUDS FOR MOUNTING.



HALF SCALE



QUARTER SCALE



THIS PRINT SUPERSEDES ALL PRINTS PRIOR TO \_\_\_\_\_

MATERIAL STEEL	TITLE LEAR MOTOR, FRAME "D" LONG COMMUTATOR WITH CLUTCH
SCALE AS NOTED DIM. INCHES	DRAWN BY W. K. Schor
TOLERANCES ARE: DECIMALS ±.003 FRACTIONS ±.004 UNLESS OTHERWISE SPECIFIED	DATE 3-29-41
ORIGINAL JOB NUMBER	APPROVED BY <b>EK</b>
	DRAWING NO. <b>CM-C-D298</b> ISSUE <b>0</b>
	LEAR AVIA OF CALIFORNIA, INC. HOLLYWOOD, CALIFORNIA

End of this  
document

# LEAR AVIA INC.

AVIATION INSTRUMENTS & ACCESSORIES

Dayton, Ohio



ATLANTIC DIVISION: 30 ROCKEFELLER PLAZA, NEW YORK CITY, N. Y.

PACIFIC DIVISION: LOS ANGELES MUNICIPAL AIRPORT, INGLEWOOD, CAL.

WICHITA DIVISION: BEECH AIRCRAFT CORP., WICHITA, KANSAS

EXPORT: 30 ROCKEFELLER PLAZA, N. Y. C. Cable: LEARAVIA, N. Y.

Office of the President

For your information 60 copies of the letter below were sent to list #13, distributors, dealers, and service dealers, on 5/5/41.

May 5, 1941

Mr. Richard Marsen  
17 West 60th Street  
New York, N. Y.

Dear Mr. Marsen:

Effective this date, May 5, the list price of the Learavian portable model RM-402-A is \$44.95.

Any orders received, which bear our date received stamp of May 5 or after, will be filled at the above list price less the discount applicable to the order.

Very truly yours,

LEAR AVIA, INC.

*Dana E. Dickinson*

Dana E. Dickinson  
Sales Department

DD:gj

MAY 7 RECD  
*Rainier*

End of this  
document

# LEAR AVIA INC.

AVIATION INSTRUMENTS & ACCESSORIES

Dayton, Ohio



ATLANTIC DIVISION: 30 ROCKEFELLER PLAZA, NEW YORK CITY, N. Y.

PACIFIC DIVISION: LOS ANGELES MUNICIPAL AIRPORT, INGLEWOOD, CAL.

WICHITA DIVISION: BEECH AIRCRAFT CORP., WICHITA, KANSAS

EXPORT: 30 ROCKEFELLER PLAZA, N. Y. C. Cable: LEARAVIA, N. Y.

Office of the President

107 copies like the copy below and  
attached were sent to miscellaneous  
individuals on 5/1/41.

May 1, 1941

Mr. Richard Marsen  
17 West 60th Street  
New York, N. Y.

Dear Mr. Marsen:

A short time ago you sent us a request for information  
regarding our Learmatic Navigator. At that time we were unable  
to send you any information and delayed action until we could.

We are now happy to enclose a copy of an article de-  
scribing the mechanics of this type of equipment. If you would  
like to have further descriptive material on this subject, please  
drop us a line as we would be happy to serve you.

Very truly yours,

LEAR AVIA, INC.

*Robert S. Van Cleve*

Robert S. Van Cleve  
Sales Manager, Military  
and Commercial Division

rc:gj

End of this  
document

# LEAR AVIA INC.

AVIATION INSTRUMENTS & ACCESSORIES

Dayton, Ohio



ATLANTIC DIVISION: 30 ROCKEFELLER PLAZA, NEW YORK CITY, N. Y.

PACIFIC DIVISION: LOS ANGELES MUNICIPAL AIRPORT, INGLEWOOD, CAL.

WICHITA DIVISION: BEECH AIRCRAFT CORP., WICHITA, KANSAS

EXPORT: 30 ROCKEFELLER PLAZA, N. Y. C. Cable: LEARAVIA, N. Y.

Office of the President

For your information 130 copies like  
the copies below and attached were  
sent to the Chief Engineers of Air-  
craft Manufactures and list #9  
4/21/41

April 21, 1941

Mr. Richard Marsen  
17 West 60th Street  
New York, N. Y.

Dear Mr. Marsen:

Enclosed are drawings of motors now being manufactured by Lear Avia, Inc. These have been drawn to full scale, half scale, and quarter scale and have been printed on thin paper for making blueprint copies. We hope you find them convenient in making layouts and new designs.

These drawings will also be included at a later date in our Electrical and Mechanical Equipment Catalog. We are sending these drawings now in answer to the numerous requests we have had for these particular types of motors.

We would be glad to send additional information or copies of these drawings to you or any other members of your organization desiring them.

Very truly yours,

LEAR AVIA, INC.

Richard M. Mock  
Manager of Motor and  
Equipment Division

RMM:rc:gj

End of this  
document

# LEAR AVIA INC.

AVIATION INSTRUMENTS & ACCESSORIES

Dayton, Ohio



ATLANTIC DIVISION: 30 ROCKEFELLER PLAZA, NEW YORK, N. Y.

PACIFIC DIVISION: 1030 N. McCADDEN PLACE, HOLLYWOOD, CALIF.

WICHITA DIVISION: BEECH AIRCRAFT CORP., WICHITA, KANSAS

EXPORT: 30 ROCKEFELLER PLAZA, N. Y. C. Cable: LEARAVIA, N. Y.

April 10, 1941

For your information, 97 copies like the copy below were sent to dealers, distributors and service dealers of Lear Avia products and also List #9 on 4/10/41.

Mr. Richard Marsen  
17 West 60th Street  
New York, N. Y.

Dear Mr. Marsen:

We attach Lear Avia's new Price List, effective this date.

These prices are guaranteed for a period of thirty days and are subject to change thereafter without notice.

Very truly yours,

LEAR AVIA, INC.

Robert S. Van Cleve  
Sales Manager, Military  
and Commercial Division

RSVC:RC:gj

#18  
APP 17 RECD  
Pawful

LEAR AVIA, INC.

DAYTON, OHIO

AIRCRAFT RADIO EQUIPMENT

<u>Item</u>	<u>Description</u> <u>Direction Finders</u>	<u>List Price</u>
ADF-6	Radio Compass Direction Finder, with 360 degree automatic azimuth indicator, complete with headphones . . . . .	\$1,500.00
ADF-7	Radio Compass Direction Finder, automatic, similar electrically to ADF-6 but with flexible cable transmission of indicator. Features adjustable polaris with <u>new patented automatic quadrantal error corrector.</u> . . . . .	\$2,000.00
ADF-8	Radio Compass Direction Finder, automatic, similar to ADF-7, with RF and IF units on same chassis completely remote controlled . . **Cables, "H" Units, Right Angle Drives, Junction Box, extra.	\$2,500.00**
LEAROMATIC	Gyromatic Navigator instrument, used in conjunction with ADF-7 or ADF-8 Automatic Direction Finder . . . . .	\$1,000.00
AMRL-1	Direction Finder for marine and aircraft use, complete with headphones, battery power supply, cables, rotatable loop, etc. . . .	\$ 179.50
AMRL-1	Direction Finder, same as above, with fixed loop, etc. . . . .	\$ 148.50
<u>Transmitters</u>		
UT-6	Transmitter, 40 watts, six frequency, four bands, complete with all accessories including one transmitting crystal, microphone. . .	\$ 575.00
UT-6	Transmitter, 50 watts, otherwise similar to above . . . . .	\$ 675.00
T-30-AB	Transmitter, 20-30 watts, two frequency, 2900 to 6500 KC, complete with all accessories including one transmitting crystal, microphone	\$377.50
AMT-1	Transmitter, battery operated, 3000 to 6300 KC, .5 watts, complete with batteries, microphone and 3105 KC crystal . . . . .	\$ 99.00
AMT-12	Transmitter, dynamotor operated, similar electrically and mechanically to above, 10 watts, complete with crystal and microphone . .	\$ 198.00

Price List - 2.

Receivers and Combinations

RCBB

Receiver, three bands (Beacon, Broadcast and Airline), crystal and variable control, complete with headphones .....\$ 197.50

T-30-AB, RCBB

Transmitter-Receiver combination (units as described above, T-30-AB transmitter and RCBB receiver) with G-30-AB power supply .....\$ 548.00

AMR-1

Receiver, battery operated, beacon band only, 200 to 400 KC, inter-phone, complete with all cables, headphones, etc. ....\$ 99.00

AMTR-1

Transmitter-Receiver combination, battery operated, complete with all accessories .....\$ 198.00

AMTRL-1

Transmitter-Receiver and Direction Finder combination, battery operated, complete with all accessories .....\$ 278.50  
Same combination, but with fixed loop .....\$ 247.50

AMTR-12

Transmitter-Receiver combination, dynamotor operated, 10 watt output, complete with all accessories .....\$ 297.00

AMTRL-12

Transmitter-Receiver and Direction Finder combination, dynamotor operated, complete with all accessories .....\$ 377.50  
Same combination, but with fixed loop .....\$ 346.50

LEAR AVIAN

Portable Receiver, beacon, broadcast and communications bands, battery and AC-DC operated, interphone .....\$ 39.50

Antenna Equipment

MOTOREEL

Trailing Wire Antenna, electrically operated, including: reel, motor, fairlead, wire, weight, warning light indicator, etc.; high frequency.....\$280.00  
Same as above; low frequency .....\$ 315.00

UNIHAND REEL SR.

Trailing Wire Antenna, manually operated, including: reel, fairlead, wire, weight, warning light indicator, etc. ....\$ 60.00

UNIHAND REEL JR.

Trailing Wire Antenna, manually operated, complete with fairlead, wire, insulators, vacu-drag, etc. (for use with AMT transmitters)....\$ 25.00

ANTENNA TUNING UNIT SR.

Loading Coil, continuously variable antenna loading inductance .....\$ 25.00

ANTENNA TUNING UNIT JR.

Loading Coil, same as above (for use with AMT transmitters) .....\$ 10.00

Price List - 3

Accessories

Wind Driven Generator, complete with voltage regulator and meter, battery, 10 feet of cable, switches and escutcheons, fuse holders and fuse, etc. ....	\$ 79.50
Wind Driven Generator, less battery, but with voltage regulator, meter, cables, etc. ....	\$ 55.00
Crystals (receiver or transmitter) .....	ea. \$ 30.00
Microphone, complete with cord and plug, Type VCU-1B .....	\$ 35.00
Microphone, complete with cord and plug, Type VCU-1 .....	\$ 20.00
Microphone, throat type (no pre-amplifier required) .....	\$ 65.00
Headphones, special Learadio lightweight, Type "A" .....	\$ 16.00
Headphones, (special for use with AMR and AMRL, Lear Avian), Type "L" .....	\$ 5.50
Sponge Rubber Ear Cushions .....	pr. \$ 1.00
Simultaneous Range Filter (for use with ADF's, RCBB, etc.) .....	\$ 45.00
Simultaneous Range Filter (for use with AMR, AMRL, Lear Avian) .....	\$ 20.00
Primary Line Filter (25 ampere capacity) .....	\$ 12.50
Whip Antenna, complete with fittings .....	\$ 7.50
Fixed Antenna Kit (less aluminum mast) .....	\$ 7.00
Fixed - Trailing Antenna Kit .....	\$ 10.00
Aluminum Mast .....	\$ 10.00
Replacement Batteries, single (for AMT-1, AMR-1, AMRL-1, APR-1, APRA, and LEAR AVIAN) .....	\$ 3.90
Replacement Batteries, combination (for AMTR-1, AMTRL-1) .....	\$ 6.00

Quotations on portable transmitters, receivers, and/or both; special frequency coverages, and so forth, furnished upon request.

March, 1941

End of this  
document

Inter-Office Correspondence  
**LEAR AVIA INC.**

AVIATION INSTRUMENTS & ACCESSORIES

L-18  
JAN 31 1941  
Lawful

Memo To.....List #9.....Date.....January 27, 1941  
From.....David F. Wentzel.....Branch.....Dayton  
Subject.....Service Bulletin No. 8.....Installation 3212-F Fairlead

Mr. Richard Marsen  
17 West 60th Street  
New York, N. Y.

The Learadio type 3212-F Fairlead described in this bulletin is made of heavy-duty porcelain. Drawings No. 2 and 3 illustrate alternate methods of mounting the Fairlead.

The Fairlead is designed for use with the Learadio Junior Unihand Reel, but is adaptable to other types of trailing antenna equipment.

The drawings illustrate the physical dimensions of the Fairlead itself, installation of Fairlead on the Fin Post, and installation of Fairlead on the Rudder Post. (Brackets not included in the assembly.)

Yours very truly,

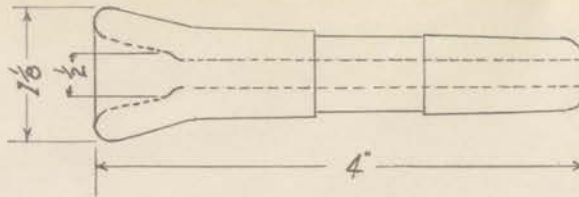
*David F. Wentzel*

David F. Wentzel  
Instruction Book  
Department

dfw/ed

1.

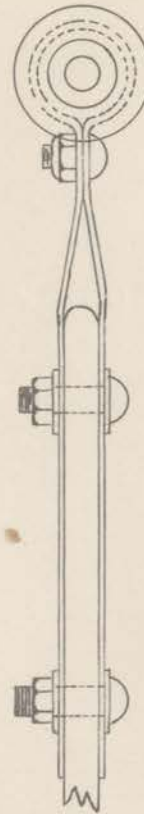
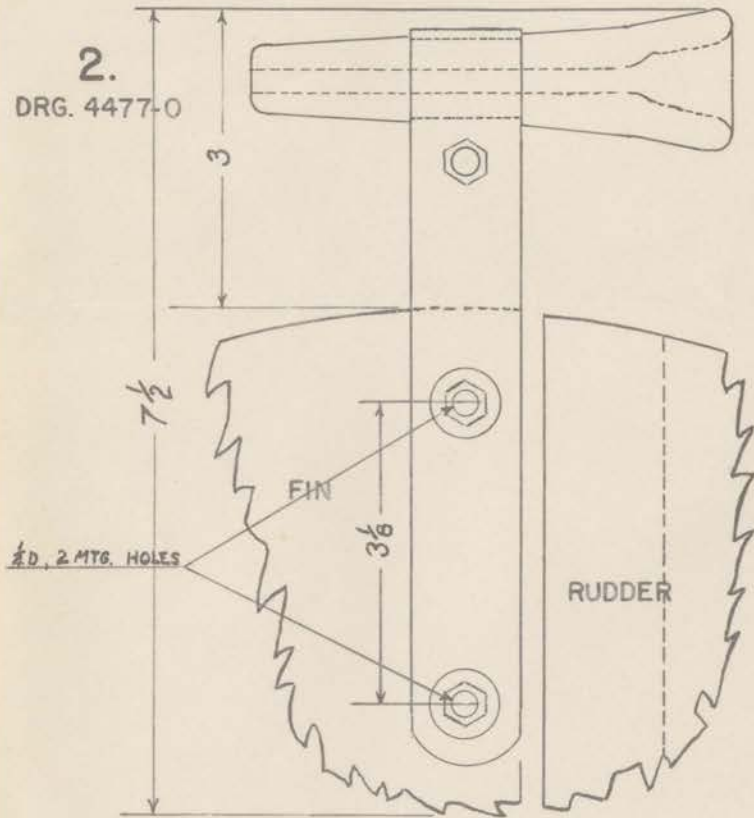
DRG. 3212-F



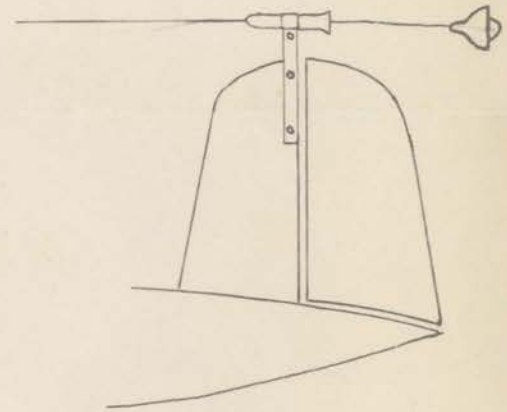
TAILPOST FAIRLEAD

2.

DRG. 4477-0

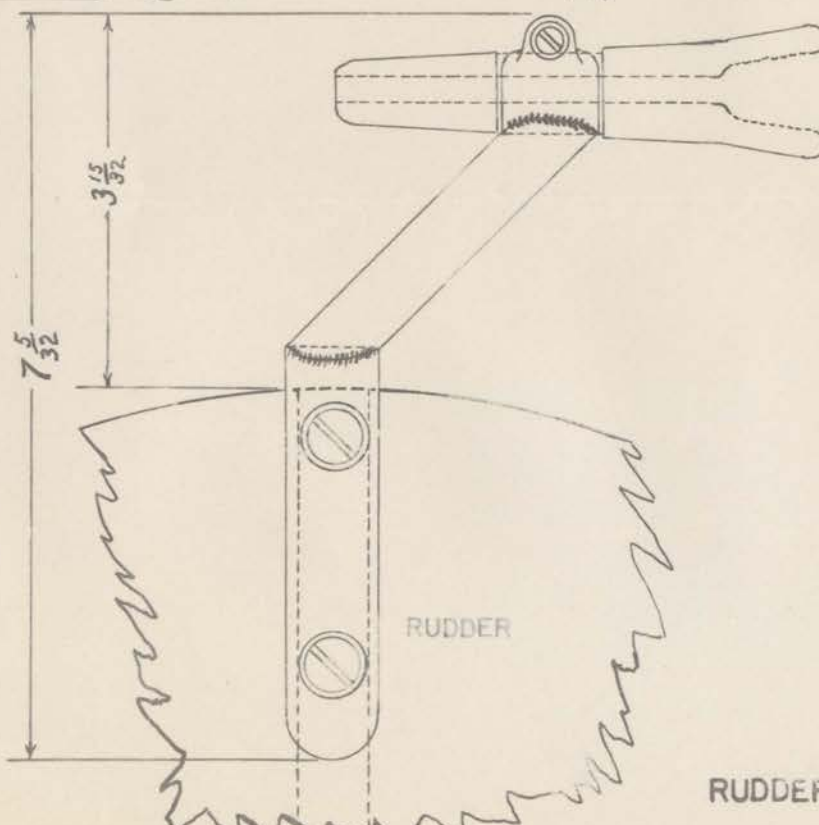
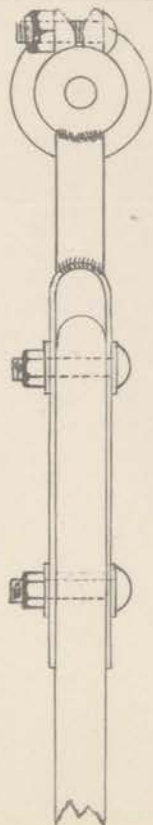


FIN POST FAIRLEAD

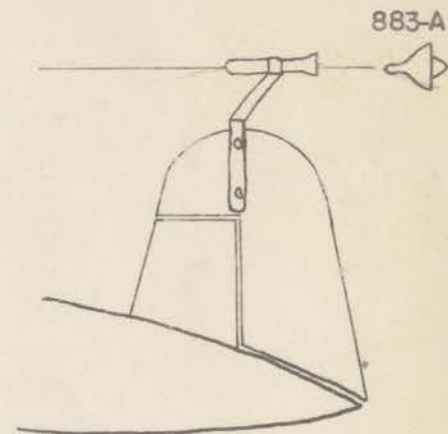


3.

DRG. 4478-0



RUDDER POST FAIRLEAD



End of this  
document

Den 78

**Inter-Office Correspondence**  
**LEAR AVIA INC.**  
AVIATION INSTRUMENTS & ACCESSORIES

Memo To.....List #9.....Date December 10, 1940  
From.....Mr. Robert S. Van Cleve.....Branch.....Dayton.....  
Subject.....

SERVICE BULLETIN #5

AMRL LOOPS

A new and improved type of Loop brush has been developed for use with the AMRL Loop. Increased spring tension and silver impregnated carbon brush material removes all possibility of noisy operation of the Loop.

It is suggested that Learcal, Learyork, and Learwichita place orders with Leardayton for a reasonable number of these replacement brush assemblies, Part #3326-G, (two required per Loop), based upon their knowledge of the probable necessary replacements within their territories.

Since this is an improvement upon the original Loop design, we will charge each customer a nominal rate of \$1.00 for removing the old brushes and replacing the new brushes. The brushes themselves will not be charged to the customer.

Each of the above offices should advise this office of any distributors or dealers in their territories to whom they believe one or more sets of these brushes should be sent, no charge.

It is suggested, also, that each of the above offices advise all distributors, service dealers, and dealers in their territory that replacement brushes are available. Thereafter, it is suggested that orders be placed with this office for the brush replacement "T" wrench, which we will send as directed to the offices and/or distributors in each territory. This "T" wrench will be charged to the Lear offices, and will remain the property of this company.

We believe that in this manner we will be able to overcome the difficulties which we have had due to poor brush contact in the AMRL Loop.

Yours very truly,  
*Robert S. Van Cleve*  
Robert S. Van Cleve

rsvc/mek

End of this  
document

18

**Inter-Office Correspondence**  
**LEAR AVIA INC.**

AVIATION INSTRUMENTS & ACCESSORIES

Memo To.....List #9.....Date..December 10, 1940.....  
From.....Mr. R. S. Van Cleve.....Branch.....Dayton.....  
Subject.....AMR-1 AND AMR-12 RECEIVERS WITH INTERPHONE PROVISION.....

All future AMR-1 and AMR-12 Receivers will be constructed with a microphone jack included for interphone use.

The method of operation is as follows:

- (1) Any aircraft microphone of the carbon button type may be plugged into the microphone jack.
- (2) The unit operates as a normal receiver with microphone plugged in or not plugged in until the microphone button is depressed.
- (3) When the microphone button is depressed, the radio signal is cut out, and the interphone audio only is heard.
- (4) Additional microphones can be supplied to provide a complete interphone system.
- (5) Jack boxes, our Part #3777-A, can be obtained upon order where additional outlets are desired.

The present AMR-1 Receivers now being produced are equipped for interphone.

The present production of AMR-12's does not include interphone provision, but the next production order will include this facility.

There will be no change in price on these new units with interphone jack. Thus, we have a real selling point that we should get over to our field organization.

Will you please advise this office how many letters you desire for distribution to your active dealer, service-dealer, and distributor organizations and we will promptly supply them.

All future advertising covering these equipments will include the announcement of this facility.

Very truly yours,

*Robert S. Van Cleve*  
Robert S. Van Cleve

rsvc/mek

End of this  
document

# LEAR AVIA INC.

AVIATION INSTRUMENTS & ACCESSORIES

Dayton, Ohio



ATLANTIC DIVISION: 30 ROCKEFELLER PLAZA, NEW YORK CITY, N. Y.

PACIFIC DIVISION: LOS ANGELES MUNICIPAL AIRPORT, INGLEWOOD, CAL.

WICHITA DIVISION: BEECH AIRCRAFT CORP., WICHITA, KANSAS

EXPORT: 30 ROCKEFELLER PLAZA, N. Y. C. Cable: LEARAVIA, N. Y.

Office of the President

November 9, 1940

Mr. Richard Marsen  
17 West 60th Street  
New York, N. Y.

Dear Sir:

How would you like to have a portable radio? -

About three years ago, when this type of radio became such a sensation, Lear Avia, Inc. entered the portable field and, in the face of the most enterprising competitors and overflooded markets, experienced a striking success by way of our portable, the Tri-Powr.

One remarkable thing about the Tri-Powr, especially in view of the fact that it is essentially an aeronautical portable radio, is its growing popularity in a field where competing portables operate on commercial bands only. Its high fidelity and durability under gruelling conditions have marked it as the leader of the country's portables.

You are the owner of a light plane. Take a look at the enclosed circular and see if you don't think you've found a buy.

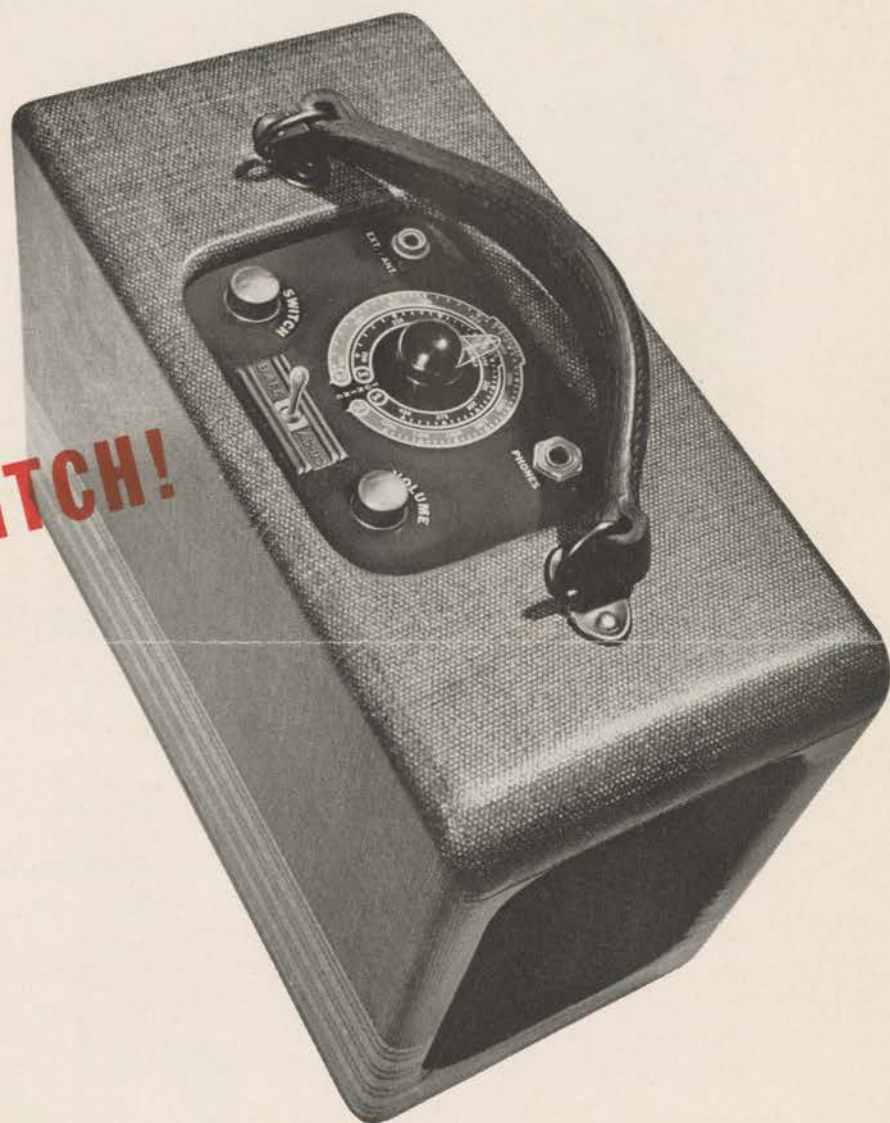
Very truly yours,

LEAR AVIA, INC.

*Robert L. Conklin*

Robert L. Conklin  
Sales Department

THE **NEW** LEARADIO TRI-POWR PORTABLE—  
OPERATION ON AC, DC, AND BATTERY



**JUST FLIP A SWITCH!**



**FLY THE BEAM!** With the TRI-POWR you navigate as the airlines do. There isn't a ship made that hasn't the space and the payload for this remarkable little radio. All you need is an antenna. In most cases even shielding is unnecessary.



**GET THE WEATHER!** Take advantage of the Government's airway weather broadcasts and fly more safely. The TRI-POWR tells you when to keep going and when to turn back.



**LAND AT TERMINAL AIRPORTS!** Tune in on 278 KC and receive the control tower's extremely valuable landing instructions. In many terminal airports a radio receiver is obligatory for landing permission. The TRI-POWR is your answer!



**GET THE WEATHER BEFORE YOU FLY!**

It takes about two seconds to remove the TRI-POWR from your ship. Then take it with you wherever you go and keep in constant touch with the weather. Use it in your home, office, hotel room—anywhere! Just plug into any electrical outlet and save your batteries!



**HEAR YOUR FAVORITE PROGRAM!**

The TRI-POWR is a two-band receiver—radio-range and commercial broadcast! So light in weight, so easy to carry, the TRI-POWR can be carried about wherever you go. Many people who have never been in an airplane are so enthusiastic about its fine tone and remarkable fidelity that they buy it in preference to all other portables just to hear the commercial broadcasts.



**USE IT AS A DIRECTION FINDER!** Featuring a built-in loop antenna, the TRI-POWR offers highly directional characteristics. Boat owners use it to get an accurate "fix" of their position even when out of sight of land!

# THE RADIO OF A HUNDRED USES

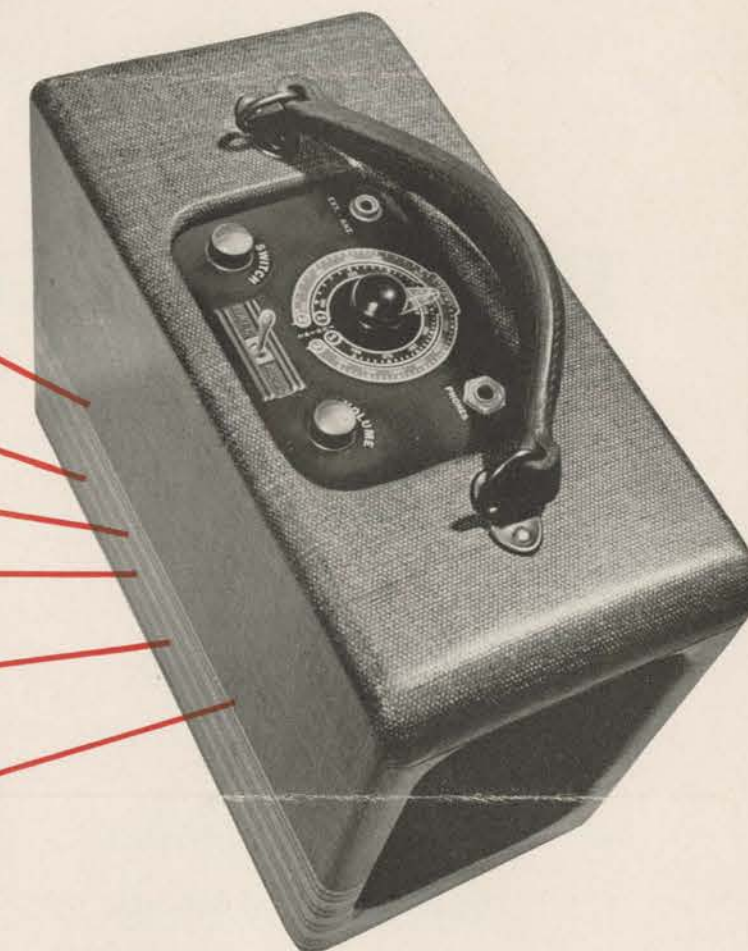
**T**ODAY there are two things you need before you can fly safely—a good airplane and the new Learadio Tri-Powr Portable!

Every hour of the day, every day of the year, the C.A.A. broadcasts the exact flying weather conditions over 26,000 miles of federal airways. It makes scheduled broadcasts of winds aloft and terminal forecasts—special broadcasts of field conditions and sudden weather changes. Control towers in many airports broadcast local conditions, traffic, and landing instructions.

Can you afford to miss this valuable and vital information? Certainly not, when it costs only \$39.50 to get the highly versatile Learadio Tri-Powr Portable, which brings you all these broadcasts *plus* all the commercial entertainment programs.

Think of it—you can use the Tri-Powr in the air or out-of-doors on its own batteries—or you can use it all day long on any electrical outlet and save your batteries—which will last over two hundred hours anyway!

There is a great demand for this tremendously popular receiver so we would advise you to order early. Why not order *right now* and be sure to have the Tri-Powr Portable when you need it! See your own dealer, or write directly to Lear Avia, Roosevelt Field, Mineola, Long Island, N. Y.



# FIFTEEN FEATURES—

## LEARADIO TRI-POWR PORTABLE

ONLY  
39<sup>50</sup>

complete with batteries.

\$5.50 additional for special Learadio headphones

**ORDER TODAY!**

1. Weight—only 12½ pounds complete with batteries.
2. Excellent sensitivity provided by R.F. amplifier.
3. Shock-proof vernier drive on tuning condenser. Velvet action tuning.
4. AC, DC, and battery operation.
5. Maximum power output on AC-DC is 1.5 watts. Economical for home use.
6. Tubes, batteries and chassis readily accessible. Just remove back panel.
7. Two-bands—radio range and commercial broadcast.
8. Carrying handle designed to permit complete vision of controls.
9. Phone jack for use on aircraft band.
10. External terminal for connecting aircraft antenna.
11. Line cord for AC-DC operation, neatly tucked away when not in use.
12. Long wave band especially calibrated for aircraft use. Special marking for control tower.
13. Battery life of 200 hours or more.
14. Excellent life balance between "A" and "B" batteries.
15. Dimensions—12" x 8½" x 6".

LEAR AVIA, INC., Roosevelt Field, Mineola, Long Island, N. Y. • *Western Division—Hangar No. 5, Los Angeles Municipal Airport, Inglewood, California* • *Wichita Division—Beech Airport, Wichita, Kansas* • *Factory—Dayton, Ohio*

End of this  
document

# LEAR AVIA INC.

AVIATION INSTRUMENTS & ACCESSORIES

Dayton, Ohio



ATLANTIC DIVISION: 30 ROCKEFELLER PLAZA, NEW YORK CITY, N. Y.

PACIFIC DIVISION: LOS ANGELES MUNICIPAL AIRPORT, INGLEWOOD, CAL.

WICHITA DIVISION: BEECH AIRCRAFT CORP., WICHITA, KANSAS

EXPORT: 30 ROCKEFELLER PLAZA, N. Y. C. Cable: LEARAVIA, N. Y.

Office of the President

November 15, 1940

Mr. Richard Marsen  
17 West 60th Street  
New York, N. Y.

Dear Sir:

Have you ever needed light-weight high efficiency motors?

Lear Avia can furnish high efficiency motors from 1 to 2000 watts mechanical power.

On the other side of this page is a drawing of Lear Avia's newest motor. This motor is rated at  $1/4$  H.P. intermittent duty and  $1/8$  H.P. continuous duty at 15000 R.P.M.

.....Yet this motor weighs only two pounds.

May we hear from you in connection with your motor needs?

Very truly yours,

LEAR AVIA, INC.

*Wm P. Lear*

William P. Lear

NOV 18 REC'D  
Ram/me  
17

4230-011

LEAR AVIA INC.

DAYTON OHIO U.S.A.

NOV 18 1940

RECEIVED

MAIL ROOM

TELETYPE UNIT

TELEPHONE UNIT

STENOGRAPHIC UNIT

RECORDS UNIT

TRAINING UNIT

SALES UNIT

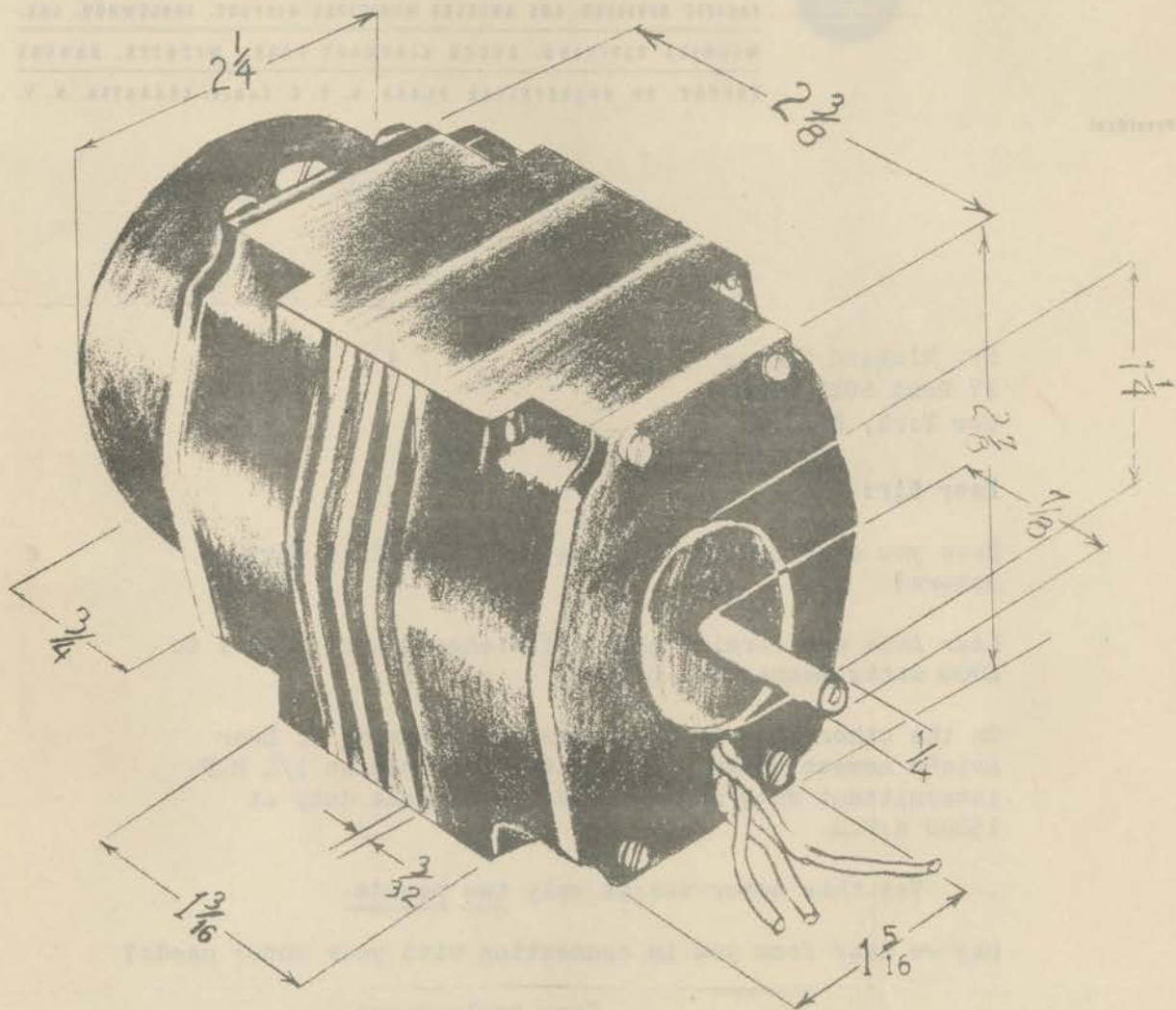
ENGINEERING UNIT

DESIGN UNIT

CONSTRUCTION UNIT

FINANCIAL UNIT

GENERAL OFFICE



**NOTE:** WEIGHT 2LBS.  
 $\frac{1}{4}$  H.P. 1 MINUTE ON  
 5 MINUTES OFF  
 $\frac{1}{8}$  H.P. CONTINUOUS  
 12 VOLTS  
 OTHER VOLTAGES ON  
 REQUEST

MATERIAL

FINISH

SCALE

UNLESS OTHERWISE SPECIFIED, DIMENSIONS ARE IN INCHES  
 AND TOLERANCES ARE: DECIMALS  $\pm .003$  FRACTIONS  $\pm .010$

OUTLINE SPECIFICATION  
 LEAR CAL. MOTOR "CM-B-101"

DRAWN BY W. JONES

DRAWING NO.

ISSUE

DATE 11-6-40

4230-Q 1

DESIGNED BY

APPROVED BY

SUPERSEDES ALL PRINTS  
 PRIOR TO

LEAR AVIA, INC.  
 DAYTON, OHIO U. S. A.

QTY

USED ON

End of this  
document

# LEAR AVIA INC.

AVIATION INSTRUMENTS & ACCESSORIES

Dayton, Ohio



ATLANTIC DIVISION: 30 ROCKEFELLER PLAZA, NEW YORK CITY, N. Y.

PACIFIC DIVISION: LOS ANGELES MUNICIPAL AIRPORT, INGLEWOOD, CAL.

WICHITA DIVISION: BEECH AIRCRAFT CORP., WICHITA, KANSAS

EXPORT: 30 ROCKEFELLER PLAZA, N. Y. C. Cable: LEARAVIA, N. Y.

177  
NOV 14 REC'D

Office of the President

November 11, 1940

Mr. Richard Marsen  
17 West 60th Street  
New York, N. Y.

Dear Sir:

It will be very much appreciated if all quotations are made through the Sales Department, rather than in the manner in which we are now making these - some of them through the Sales Department, some of them through the Engineering Department, and some of them through the Production Department.

It must be immediately apparent to you that in the final analysis the Sales Department is required to write up the order, handle the service for the customer, see that the equipments get out on time, and handle the complaints thereafter. Further than this, the Sales Department is called upon constantly to quote prices on items upon which it knows nothing whatsoever relative any previous quotations, changes in design, or instructions that might have been issued.

I should like to suggest that in an effort to establish a coordinated routine that all departments when asked for quotations, turn these requests over to the Sales Department with their advice relative the quotations, so that the origin of this may come from the proper department.

This is just good organization, and it is the only manner in which we can eliminate the enormous amount of confusion that now exists in the handling of these requests to our branches, to Learcal, and to our customers.

Your cooperation will be appreciated.

Very truly yours,

*Robert S. Van Cleave*  
Robert S. Van Cleave

rsvc/mek

End of this  
document

# LEAR AVIA INC.

AVIATION INSTRUMENTS & ACCESSORIES

Dayton, Ohio



ATLANTIC DIVISION: 30 ROCKEFELLER PLAZA, NEW YORK CITY, N. Y.

PACIFIC DIVISION: LOS ANGELES MUNICIPAL AIRPORT, INGLEWOOD, CAL.

WICHITA DIVISION: BEECH AIRCRAFT CORP., WICHITA, KANSAS

EXPORT: 30 ROCKEFELLER PLAZA, N. Y. C. Cable: LEARAVIA, N. Y.

Office of the President

November 11, 1940

Mr. Richard Marsen  
17 West 60th Street  
New York, N. Y.

Dear Sir:

Subject: ARC-6 Radio Compass

It has been the desire of the management for some time that we discontinue from our standard line of merchandise the ARC-6 Radio Compass. This unit has listed at the following:

With fixed loop. . . .	\$750.00
With rotatable loop. . . .	\$950.00

The reason for this decision is due to the fact that the market for a left-right type of indicator in the domestic commercial field has been practically eliminated by the advent of the ADF-6, 7, and 8 Automatic Direction Finders.

We do not carry in stock assemblies for the manufacture of the ARC-6 equipment. Thus, in the future, if it is necessary for you to accept orders domestically for the ARC-6, please increase the list price in accordance with the figures shown below:

With fixed loop. . . .	\$975.00
With rotatable loop. . . .	\$1235.00

The above prices are subject to the normal discounts.

It will be necessary that we also take into consideration the delayed delivery on this type of equipment due to the difficulty in obtaining raw materials and outside fabricated parts.

Very truly yours,

*Robert S. Van Cleave*  
Robert S. Van Cleave

rsvc/mek

End of this  
document

# LEAR AVIA INC.

AVIATION INSTRUMENTS & ACCESSORIES

Dayton, Ohio



ATLANTIC DIVISION: 30 ROCKEFELLER PLAZA, NEW YORK CITY, N. Y.

PACIFIC DIVISION: LOS ANGELES MUNICIPAL AIRPORT, INGLEWOOD, CAL.

WICHITA DIVISION: BEECH AIRCRAFT CORP., WICHITA, KANSAS

EXPORT: 30 ROCKEFELLER PLAZA, N. Y. C. Cable: LEARAVIA, N. Y.

OCT 21 REC'D  
*Ran/face*  
*D. M. L.*

Office of the President

October 16, 1940

Mr. Richard Marsen  
17 West 60th Street  
New York, N. Y.

Dear Sir:

We quote below a telegram sent to the Atlantic and Pacific Divisions today modifying our policy relative the sale of APRA equipments.

"Effective immediately single APRA sales to dealers 25%.  
Quantities ten or more 40%. Atlantic quota APRA's balance  
year 600 units."

(Pacific Quota 500 units).

The district offices have insisted upon a modification of the APRA discount schedule. We are complying with their request accordingly, but this modification carries with it the responsibility for meeting quotas specified. We are not going to give long discounts and then not move a volume of equipment; thus, it is up to you to see that these quantities are met.

It is suggested that you promptly contact every possible outlet for APRA's. This includes department stores, sporting goods stores, marine ship chandleries, electrical supply houses, and any other dealer or distributor outlet in any market where these equipments may be sold.

Yours very truly,

LEAR AVIA, INC.

*Robert S. Van Cleve*

Robert S. Van Cleve  
Sales Manager, Military  
and Commercial Division

End of this  
document

Mr. Marsen

October 3, 1940

MEMO TO THE ORGANIZATION

FROM: CHRIS. L. SLOMAN

Gentlemen:

It has been brought to our attention that we failed in our memo of September 25 to mention the weight of the wind driven generator. This was very definitely an error on our part, and we wish to inform you on this point. The total weight of generator and accessories, namely, regulator with shock mount, meter, cable, three shielded condensers, and miscellaneous small parts such as switches and fuses, is 9.2 pounds. The battery, which is optional, weighs 15 pounds.

Very truly yours,

*C. L. S.*

Chris. L. Sloman *mpp*

CLS:MPP

End of this  
document

# LEAR AVIA INC.

AVIATION INSTRUMENTS & ACCESSORIES

Dayton, Ohio



ATLANTIC DIVISION: 30 ROCKEFELLER PLAZA, NEW YORK CITY, N. Y.

PACIFIC DIVISION: LOS ANGELES MUNICIPAL AIRPORT, INGLEWOOD, CAL.

WICHITA DIVISION: BEECH AIRCRAFT CORP., WICHITA, KANSAS

EXPORT: 30 ROCKEFELLER PLAZA, N. Y. C. Cable: LEARAVIA, N. Y.

Office of the President

October 2, 1940

Mr. Richard Marsen  
17 West 60th Street  
New York, N. Y.

Dear Sir:

The LEARADIO Motor and Electro-Magnetic Clutch has found many applications in the aircraft industry where exact, rapid, and accurate control of power is necessary.

The enclosed drawing shows the latest use to which this motor and clutch has been applied. Here is a landing gear or wing flap adaptation of a 1/2 H.P. motor and electro-magnetic clutch with a gear box designed for a large aircraft manufacturer. The total weight of this unit is 13 pounds. It can be used either with 12 or 24 Volts and has many applications in addition to its original design for landing gear or wing flaps.

In preparation for mailing this to you, we had to reduce the size of the drawing from the original. If you desire a full-scale print of this, we will be glad to send one to you.

Very truly yours,

LEAR AVIA, INC.

End of this  
document

# LEAR AVIA INC.

AVIATION INSTRUMENTS & ACCESSORIES

Dayton, Ohio



ATLANTIC DIVISION: 30 ROCKEFELLER PLAZA, NEW YORK CITY, N. Y.

PACIFIC DIVISION: LOS ANGELES MUNICIPAL AIRPORT, INGLEWOOD, CAL.

WICHITA DIVISION: BEECH AIRCRAFT CORP., WICHITA, KANSAS

EXPORT: 30 ROCKEFELLER PLAZA, N. Y. C. Cable: LEARAVIA, N. Y.

SEP 30 1940

*Ranfur*

Office of the President

September 23, 1940

Mr. Richard Marsen  
17 West 60th Street  
New York, N. Y.

Dear Sir:

Recently, a friend of mine bought a plane. He could scarcely wait for me to see it, so one morning I cleared my desk early and went out to the field to look the ship over.

"Beautiful plane," I said.

"Cost me seven thousand dollars," said he.

"Insured?"

"You bet!"

"But no radio," I said.

"I'm just flying contact," said he. "No radio."

"Penny wise," I said.

"Go on," said he. "You're prejudiced. You make radios. Why wouldn't you want everyone to have one?"

Now this fellow was an old friend of mine and I could call him a chump and get away with it. Here's a man who puts a substantial sum of money into a brand new airplane, protects the investment by having it underwritten at 10% of its value per annum, pays additional premiums on his life insurance, and then completely overlooks the kind of security that prevents trouble.

No one who flies a plane should be without a complete system of radio communication and navigation. If flying is going to cost you a dollar, it may as well cost you an additional penny. And the Learadio AMTRL-12 is more than a radio communication system. It is invaluable assurance of personal safety at a price that makes horse-sense!

The AMTRL-12 provides the pilot with the three major forms of radio contact necessary for the successful completion of every cross-country flight. He can call for and receive any information he desires - navigate accurately on all radio beams - "home" on radio range stations from any position.

2.

The three-way radio idea is a new idea at the price Lear Avia sells it. 12 watt transmitter with remarkable range ... highly selective receiver ... direction finder with electro-statically shielded loop and azimuth dial ... special dynamotor power supply. This outfit achieves the incredibly low gross weight of 24 pounds ... meets all CAATC requirements ... SELLS COMPLETE FOR ONLY \$377.00!

The AMTRL-12 is adaptable to any plane, including the lightest of the light ships. It is one form of insurance that you will not have to renew each year, a happy kind of insurance that will protect you against accidents instead of consoling you afterwards.

\$377.00 is the price of the AMTRL-12. Visit the nearest Learadio branch for a demonstration or mail the enclosed postage-paid postcard and I'll send you full details by return mail.

If you've already seen the AMTRL-12 and are sold on its remarkable efficiency, just sit down and write out a check and I'll see that the units are immediately expressed, ready for installation. You'll have them in plenty of time for that trip you've been planning.

Cordially yours,

*Bill Lear*

Bill Lear

P.S. - And don't forget the Lear APR-A Portable at \$39.50. Commercial band as well as radio range - AC and DC as well as battery operation. Get the weather before you leave for the field. Safe flying begins on the ground!

End of this  
document

# LEAR AVIA INC.

AVIATION INSTRUMENTS & ACCESSORIES

Dayton, Ohio



ATLANTIC DIVISION: 30 ROCKEFELLER PLAZA, NEW YORK CITY, N. Y.

PACIFIC DIVISION: LOS ANGELES MUNICIPAL AIRPORT, INGLEWOOD, CAL.

WICHITA DIVISION: BEECH AIRCRAFT CORP., WICHITA, KANSAS

EXPORT: 30 ROCKEFELLER PLAZA, N. Y. C. Cable: LEARAVIA, N. Y.

SEP 30 REC'D  
Rampf

Office of the President

Mr. Richard Marsen  
17 West 60th Street  
New York, N. Y.

September 23, 1940

Dear Sir:

The other day a group of us set out from Roosevelt Field for the air meet at Wings, near Philadelphia. It was swell weather for flying, air calm as a mill pond, ceiling and visibility unlimited. We had a good time with the friendly crowd that came for the show and when we took off for home at 6 P.M., we were pretty well pleased with ourselves and the day's outing. But we hadn't been in the air more than 20 minutes when a tremendous line squall began to pile across the horizon from the West, cutting us off from our home base. We tried to fly around it, but in the briefest time imaginable, we were closed in on all sides.

We had a radio, of course, and the first thing we did was to get a report on conditions at a nearby airport. We slid in under minimum ceiling and it seemed that no sooner had our wheels touched turf when a slashing rain barrage broke from the woods and blotted out everything with solid sheets of water.

One of the Roosevelt Field bunch, flying a light plane, had a close brush with disaster due to lack of radio equipment. Running from the dangerous conditions beneath the overcast, he lost track of position entirely and was about to pancake his ship into a piney woods clearing when at the last minute, he spotted an emergency field. Luckily his only damage was to the seat of his pants. Levelling off on what looked like the surface of the field, he dropped down, but hard, through three feet of uncut grass.

There was a way for this fellow to handle the situation without letting it get so close that it nearly took a bite out of him. With a Learadio AMRL-1 Receiver and Direction Finder he could have pointed his ship at any range or marine radio station, homed on their signals until he established position, and then chosen a landing field - instead of finding himself lost and waiting for chance to make him a last-second present of safety.

2.

There is no reason for anyone to be without an efficient radio direction finder. It is an absolutely indispensable aid to accurate and safe navigation, now required by the CAA on all airway transportation systems. Even the big airliners which carry every conceivable instrument for cross-country flying, occasionally lose the beam due to weather conditions. A direction finder eliminates the time and fuel consuming necessity of radio-range orientation, enables the ship to "home" directly on any voice or any code signals, from any angle!

The Learadio AMRL-1 brings this imperatively necessary device within the range of the most modest means with a sturdy receiver and loop combination adaptable to even the lightest of the light ships. It costs but \$179.50, including electrostatically shielded loop with azimuth dial and the Learadio AMR-1 Receiver - complete with tubes and batteries, headphones and cables. No generator needed. Its phenomenally low weight - less than 13 pounds installed - makes it the inevitable choice for Cubs, Taylorcrafts, Aeroncas and Luscombes. It is the biggest value in radio today, as essential to a pilot's minimum equipment as the wings on his plane.

The Learadio AMRL-1 Receiver and Direction Finder will return you a daily dividend of greater security in the air, afford a degree of relaxation you have never previously known in cross-country flying. The next time you're out to the airport, have your dealer put the AMRL-1 through its paces. If he does not have a demonstrator on hand, send the enclosed postage-paid postcard to me personally at Dayton, and I'll see that you receive full details by return mail.

Cordially yours,

Bill Lear

End of this  
document

# LEAR AVIA INC.

AVIATION INSTRUMENTS & ACCESSORIES

Dayton, Ohio



ATLANTIC DIVISION: 30 ROCKEFELLER PLAZA, NEW YORK CITY, N. Y.

PACIFIC DIVISION: LOS ANGELES MUNICIPAL AIRPORT, INGLEWOOD, CAL.

WICHITA DIVISION: BEECH AIRCRAFT CORP., WICHITA, KANSAS

EXPORT: 30 ROCKEFELLER PLAZA, N. Y. C. Cable: LEARAVIA, N. Y.

Office of the President

"ANNOUNCING"

## THE NEW LEARADIO WIND DRIVEN VOLTAGE REGULATED GENERATOR

After much checking, testing, and research, LEARADIO now has available a stream-lined wind driven generator. This unit lists complete with battery, voltage regulator, meter, and 10 feet of cable for \$79.50.

The wind driven generator and voltage regulator complete without battery is \$55.00.

Neither of these prices includes a mounting bracket due to the fact that mounting in each airplane is different. However, there has been a price established at the plant for installing a wind driven generator complete with bracket for \$25.00 and a price tentatively established for brackets alone of \$7.50.

The complete generator kit consists of a generator, stream-lined propeller, black crackle finished cover, regulator, instrument panel meter, battery (Willard or Exide), 10 feet of cable, switch, escutcheons, fuse holder and fuse.

As before mentioned, the list price on this is \$79.50 complete, \$55.00 without battery.

If you require additional details prior to a general publicity release and catalogue, we will be glad to send you specifications, drawings or photographs.

Very truly yours,

LEAR AVIA, INC.

P.S. This really deserves an announcement of its own but in order that you will learn of it immediately, might we add that we now have, at the LEARADIO plant at Dayton, F.C.C. approved frequency checking equipment. This equipment is available for checking transmitter frequencies in itinerant aircraft at any time during the working day and by appointment twenty-four hours a day. This is another LEARADIO service to aircraft owners.

SEP 26 REC'D  
Ram/ml  
Lear  
L

End of this  
document

SEP 26 REC'D  
Ram/mc  
Lear  
L

September 23, 1940

MEMO TO THE ORGANIZATION

FROM CHRIS. L. SLOMAN

SUBJECT: HEADPHONES AND MICROPHONES

Gentlemen:

Following a conversation with Mr. Lear, the following prices have been decided on for the microphone to accompany the AMR-1 and -12 with interphone. Microphones will cost \$15 for the VCU-1-A. The VCU-1-B will list at \$20.

Disregarding the first memo of September 23d, there has been a change in headphones and there will be a new Universal headphone selling at \$16. The model "E" now selling at \$10 will be discontinued and the model "A" now selling at \$16 will be continued. In other words, instead of having three different types of headphones, there will be two different types, model "L" selling at \$5.50 and a model "A" at \$16.

Very truly yours,

C. L. S. m.p.p.  
Chris. L. Sloman

CLS:MPP

An interphone system will soon be available and will list at \$24.95, without phones or mikes. According to a memo of this same day, mikes will be available at \$15 for the VCU-1-A or \$20 for the VCU-1-B. Headphones will be available at \$5.50 for the model "L" and \$16 for the model "A".

End of this  
document

SEP 25 REC'D  
Ran/wl

September 23, 1940

MEMO TO THE ORGANIZATION

FROM CHRIS. L. SLOMAN

SUBJECT: AMR-1 AND -12 WITH INTERPHONE

Gentlemen:

The writer was in error in the previous memo concerning the new interphone adaption on the AMR-1 and -12. It had previously been decided that all AMR-1's and -12's in the future will contain the extra microphone jack and wiring to give these units interphone. Therefore, no change in model or type number will be necessary. It will simply be understood that, after a certain serial number to be announced at a later date, all AMR-1's and -12's will contain interphone.

If there are any corrections, changes or additions to these, please advise the writer.

Very truly yours,

*C. L. Sloman*

Chris. L. Sloman

CLS:MPP

End of this  
document

R. Marsen

SEP 25 REC'D  
Rams/ue

September 23, 1940

MEMO TO THE ORGANIZATION

FROM CHRIS. L. SLOMAN

SUBJECT: HEADPHONES

Gentlemen:

As of September 19th, there are three model headphones available, although at the exhaustion of the present supply of model "A" headphones priced at \$16, these will no longer be supplied. As it now stands, there are three types of headphones:

- model "A" selling at \$16
- model "B" selling at \$10
- model "L" selling at \$ 5.50

As previously mentioned, upon the exhaustion of the present supply of model "A" headphones, there will remain only two types--models "B" and "L".

If there are any suggestions on this or any other clarifying information, please contact the writer.

Very truly yours,

LEAR AVIA, INC.

C. L. S.  
mpp  
Chris. L. Sloman

CLS:MPP

End of this  
document

Lear

#17

General Letters re Products

End of this  
document