

PHOTOGRAPHS





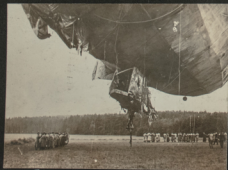
GOtha 'ZEP' HANGAR AT TREVES



U.S. Airfield at Suilly Photo taken by Gotha G. 6000.



Berlin



Zepp. crash.



Battle Field - Amiens.



HQ'S 4th CORPS AIR SERVICE AT SINZIG, GERMANY.

ORDERLY

CAPT. JAMES

BEAMAN

H.C.F.

PARADISE



ZINZIG, GERMANY

PART OF CASTLE GROUNDS



Luncheon - Barbarosa Castle - ZINZIG, GER. Hd'q's, 4th Corps AIR S.



Boche ships



Burning Balloon and Parachutes



Interior of Church 1915



Boche machine-gunners.



COBLENZ

DECORATION OF FLIERS OF 12TH - 9TH 94TH SQUADRONS.



OLD ROMAN BRIDGE. TREVES, GER.



OLD ROMAN CHURCH AT TRIER (TRIER)



ROMAN CHURCH - TRIER



STOLZENFELS CASTLE ON RHINE ABOVE COBLENZ GERMANY

PHOTO SEC. 10-2-15 G31



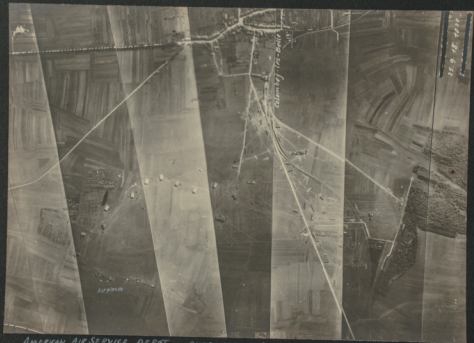
INTERIOR ROMAN CHURCH AT TREVES.

25 MINUTE EXPOSURE

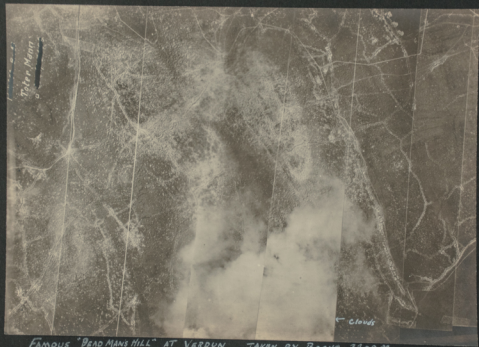


STOTZENFELS CASTLE ON RHINE ABOVE COBLENZ GERMANY
4 PHOTO SEC. 10-2-19 68 80

KAISER'S PALACE.



AMERICAN AIR SERVICE DEPOT. OVERLAPPING PICTURE TAKEN BY BOEHE AT 6300M.



FAMOUS "DEAD MAN'S HILL" AT VERDUN TAKEN BY BOCHS 3200 M.



Shell Fire on Cross Roads

500 M.

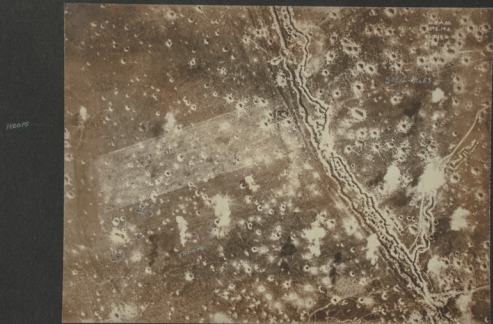


"VERTICLE" PHOTO



BRITISH FRONT LINE. SMALL BLACK DOTS ARE HELMITS OF
ADVANCING TROOPS. A REMARKABLE PICTURE SHOWING HOW
ATTACK CAN BE SEEN FROM AIR. PICTURE ON NEXT PAGE SHOWS
SAME TROOPS CAUGHT IN GERMAN BARAGE IN FRONT OF BOOHE LINES.

2



WHITE BLOTCHES ARE SHRAPNEL BURSTS - IN FRONT OF TRENCH
IS BOCHE BARRAGE. IN REAR BRITISH PROTECTIVE NOTICE TROOPS



VEAUX - DESTROYED BY U.S. SHELL FIRE.
AN EXCELLENT EXAMPLE OF DESTROYED VILLAGE . 200 M.



Porta Nigra - TREVES.



Kaiser's Palace - TRIER



Entrance to Amphitheatre - TRIER.



ROMAN AMPHITHEATRE AT TREVES.



S.E.5
BRITISH SCOUT PLANE



SUB. -

ZEEBRUGGE

NOTE BRITISH SHIPS SUNK TO BLOCK EXIT OF "U. BOATS", AND PATH OF
OUTBOUND SUB. "VINDICTIVE" AT MOLE.



ZEBRUGE



OSTEND
Suite, in harbor



FIRST "LIBERTY" FORMATION



U.S. OBSERVATION BALLOON AND SALMONSON PLANE



SALMONSON
FRENCH AND U.S. OBSERVATION PLANE.



MOTOR OF "GOTHA"



Toul

5007.



U.S. PRISON CAMP BURNING AT PACY.

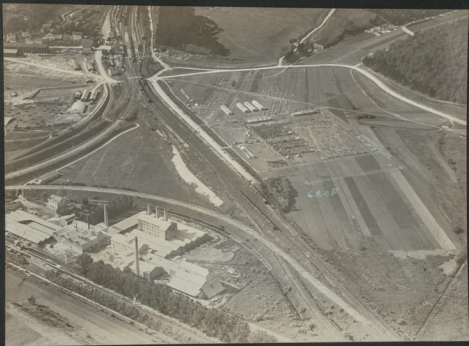
350 M.





TOUL 300 M.

BOCHE "ZEP" HANGAR IN CENTRE. AN EXCELLENT "OBLIQUE"



A U.S. PRISON CAMP



Enlargement of Prison Camp Seen on page



CHATEAU-THIER



Toul



Toul



Cross Roads

400 M.



Kaiser's Palace on Rhine. taken from Air

200M.



Some dead ones.



GEFANGENE AMERIKANER. 18

AMERICAN PRISONERS IN GERMANY. APRIL 1918



2018 Gef. Amerikaner

AMERICAN PRISONERS. NOTE MEN WITHOUT SHOES AND
FEET WRAPPED IN RAGS



gefangene Amerikaner

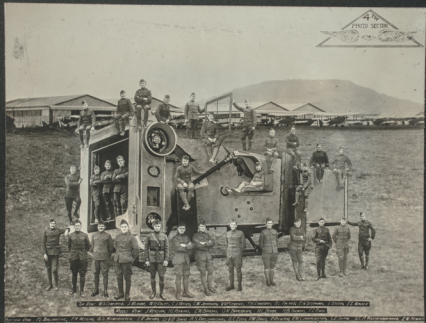
U.S. PRISONERS



5 MOTORED "GOTHA". DOCKED SHIP BROUGHT DOWN BY BRITISH.



12TH AERO SQUADRON AT COBLENZ. JAN. 1919





Dead Boche



Boche Squadron.



N.C. 3 at AZORES

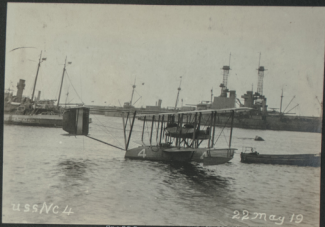


Admiral reviewing 9 Troops.

Bocho pilots and capture U.S. Spad.



RHEIMS. photo from Replane 1916



USS NC 4

22 May 19

AZORES



12th Aero Ship on Monastelle. Ger.



*Zepp. hangar at TREVES,
and Zepp coming out of same.*



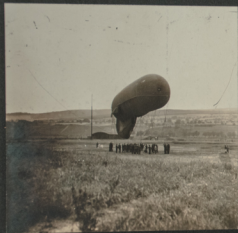
Dead Boche in trench



Boche sausage



Von Trepitz Carl of Austria Kaiser Hindenburg.



Boche Balloons

